

Supplier's Product Code :
 Product Added :
 Last Updated by Supplier :
 erudus id :

3003
 26 October 2006
 10 May 2023
 4360e1ef9f1b4b169492588b39febc10



The information on the **Erudus System** has been supplied by the manufacturers of the products and, whilst the owners of the Erudus System take steps to ensure the information is regularly updated, they give no warranty and no guarantee that the information is accurate. Product information and ingredients may change, please always read product labels carefully in addition to using the information provided by Erudus One.

We do not accept liability for any inaccuracies or incorrect information contained on this site. Please visit <http://www.erudus.com/terms-and-conditions> for full terms and conditions.

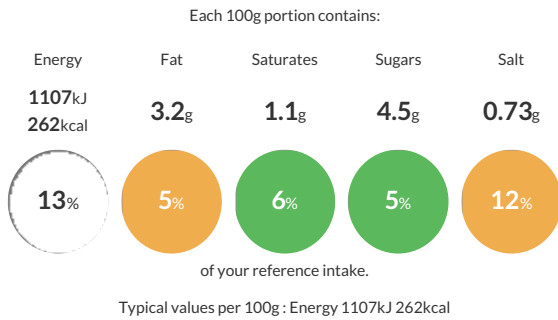
8.5" Jumbo Hot Dog Roll Side Sliced

Short Product Name:
 Hot Dog Roll

A fully baked, large, white hot dog roll, approximately 8.5 inches in length. The rolls are side sliced and are supplied frozen.

Traded Unit GTIN: **05037173100980** Internal GTIN: **5037173101420** Supplier : **Lantmannen Unibake** Suppliers Product Code : **3003**

Reference Intake



Nutritional Information

Typical Values	Per 100g
Energy	1107kJ 262kCal
Carbohydrates	50.6g
of which sugars	4.5g
Fat	3.2g
of which saturates	1.1g
Fibre	2.2g
Protein	8.8g
Salt	0.73g

Allergy Information

Key: **Contains** **May Contain**

Contains Cereal/Gluten	Does Not Contain Milk	Does Not Contain Eggs	Does Not Contain Peanuts	Does Not Contain Nuts	Does Not Contain Crustaceans	Does Not Contain Mustard
Does Not Contain Fish	Does Not Contain Lupin	May Contain Sesame	Does Not Contain Celery	Does Not Contain Soya	Does Not Contain Molluscs	Does Not Contain Sulphur Dioxide

Dietary Information

Key: **Suitable for**

Suitable for Vegetarian	Suitable for Vegan	May not be suitable for Kosher	Suitable for Halal	May not be suitable for Coeliac
-------------------------	--------------------	--------------------------------	--------------------	---------------------------------

Allergen Statement

For allergens, including cereals containing gluten, see ingredients in **CAPITALS**.
 May also contain sesame seeds.

Ingredients

WHEAT Flour (Calcium, Iron, Niacin, Thiamin), Water, Sugar, Vegetable Oils (Palm and Rapeseed), Yeast, Salt, Emulsifiers (E472e, E471), Preservative (E282), Flour Treatment Agent (E300).