

The information on the [Erudus System](#) has been supplied by the manufacturers of the products and, whilst the owners of the Erudus System take steps to ensure the information is regularly updated, they give no warranty and no guarantee that the information is accurate. Product information and ingredients may change, please always read product labels carefully in addition to using the information provided by Erudus One.

We do not accept liability for any inaccuracies or incorrect information contained on this site. Please visit <http://www.erudus.com/terms-and-conditions> for full terms and conditions.

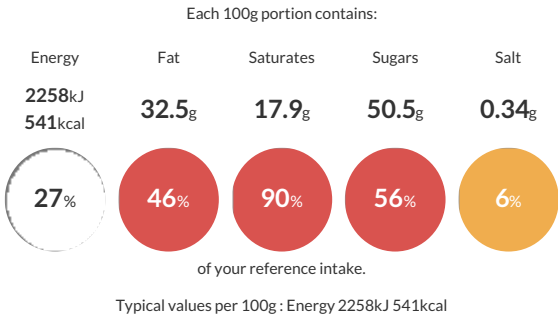
Gold Billions Bar 39g x 24 CDU

Short Product Name:
Gold Billions Wafer Bar

Cream Filled Wafer Bar with Milk Chocolate and White Chocolate and Caramel Flavoured Coating

Traded Unit GTIN: 5000168001227 Internal GTIN: 5000168001197 Supplier : Pladis (UK) Ltd Suppliers Product Code : 45093

Reference Intake



Nutritional Information

Typical Values	Per 100g
Energy	2258kJ 541kCal
Carbohydrates	55.3g
of which sugars	50.5g
Fat	32.5g
of which saturates	17.9g
Fibre	1.2g
Protein	7.3g
Salt	0.34g

Allergy Information

Key: Contains May Contain


Contains
Cereal/Gluten


Contains
Milk


Contains
Eggs


May Contain
Peanuts


May Contain
Nuts


Does Not
Contain
Crustaceans


Does Not
Contain
Mustard


Does Not
Contain
Fish


Does Not
Contain
Lupin


Does Not
Contain
Sesame


Does Not
Contain
Celery


Contains
Soya


Does Not
Contain
Molluscs


Does Not
Contain
Sulphur
Dioxide

Allergen Statement
Contains: Milk, Egg, Soya, Gluten (Wheat).
May also contain Peanuts, Nuts.

Ingredients

MILK Chocolate (42%) [Sugar, Dried Whole MILK, Cocoa Mass, Cocoa Butter, Emulsifier (SOYA Lecithin), Salt, Flavouring], White Chocolate and Caramel Flavoured Coating (24%) [Sugar, Cocoa Butter, Dried Whole MILK, Caramel (Dried Whey (MILK), Maltodextrin, Palm Fat, Sugar), Dried Skimmed MILK, Butter Oil (MILK), Emulsifier (SOYA Lecithin), Salt, Flavouring], Sugar, Palm Oil, WHEAT Flour, Dried Whole MILK, Dried Skimmed MILK, Dried Whey (MILK), Lactose (MILK), Starch, Emulsifier (SOYA Lecithin), Flavourings, Salt, Dried EGG White

Dietary Information

Key: Suitable for


Suitable for
Vegetarian


May not be
suitable for
Vegan


May not be
suitable for
Kosher


May not be
suitable for
Halal


NO DATA for
Coeliac