

Supplier's Product Code : 3042
 Product Added : 09 July 2025
 Last Updated by Supplier : 09 July 2025
 erudus id : 448af5bc3a8644b8a85e2078127b7cf7



The information on the **Erudus System** has been supplied by the manufacturers of the products and, whilst the owners of the Erudus System take steps to ensure the information is regularly updated, they give no warranty and no guarantee that the information is accurate. Product information and ingredients may change, please always read product labels carefully in addition to using the information provided by Erudus One.

We do not accept liability for any inaccuracies or incorrect information contained on this site. Please visit <http://www.erudus.com/terms-and-conditions> for full terms and conditions.

British Diced Lamb Leg

Short Product Name:

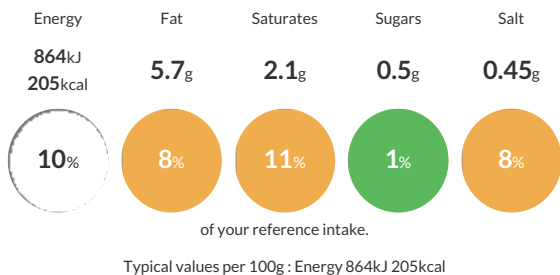
Red Tractor Assured 90VL 30x30m Diced

Diced Lamb Leg prepared from PAD boneless muscles, machine diced to a target size of 30x30mm, +/- 10mm. 1kg packs.

Traded Unit GTIN: **5032990003377** Internal GTIN: Supplier: **Pilgrim's UK Lamb** Suppliers Product Code: **3042**

Reference Intake

Each 100g portion contains:



Nutritional Information

Typical Values	Per 100g
Energy	864kJ 205kCal
Carbohydrates	3.2g
of which sugars	0.5g
Fat	5.7g
of which saturates	2.1g
Fibre	0.5g
Protein	35.2g
Salt	0.45g

Allergy Information

Key: **Contains** **May Contain**

Does Not Contain Cereal/Gluten	Does Not Contain Milk	Does Not Contain Eggs	Does Not Contain Peanuts	Does Not Contain Nuts	Does Not Contain Crustaceans	Does Not Contain Mustard
Does Not Contain Fish	Does Not Contain Lupin	Does Not Contain Sesame	Does Not Contain Celery	Does Not Contain Soya	Does Not Contain Molluscs	Does Not Contain Sulphur Dioxide

Gluten Claim

Gluten content is less than 20ppm.

Allergen Statement

n/a

Ingredients

100% lamb

Dietary Information

Key: **Suitable for**

NO DATA for Vegetarian	NO DATA for Vegan	May not be suitable for Kosher	Suitable for Halal	Suitable for Coeliac
------------------------	-------------------	--------------------------------	--------------------	----------------------