

Supplier's Product Code :  
Product Added :  
Last Updated by Supplier :  
erudus id :

FH0023  
07 May 2025  
07 May 2025  
45810722f1c64ecb82544dae00d0a5d0



The information on the Erudus System has been supplied by the manufacturers of the products and, whilst the owners of the Erudus System take steps to ensure the information is regularly updated, they give no warranty and no guarantee that the information is accurate. Product information and ingredients may change, please always read product labels carefully in addition to using the information provided by Erudus One.

We do not accept liability for any inaccuracies or incorrect information contained on this site. Please visit <http://www.erudus.com/terms-and-conditions> for full terms and conditions.

## Jude's Plant Based Salted Caramel Stickbars - 20 x 80ml

Short Product Name:

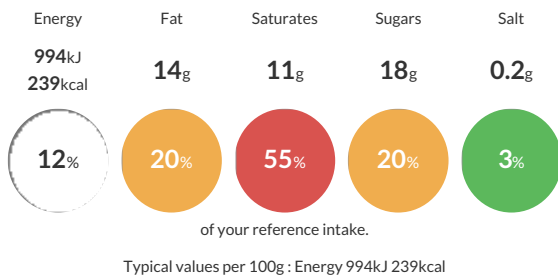
Jude's Plant Based Salted Caramel Stickbars - 20 x 80ml

Vegan salted caramel ice cream with caramel sauce enrobed with cocoa coating and cinder toffee pieces.

Traded Unit GTIN: 05060081116200 Internal GTIN: 5060081115913 Supplier: Judes Ices Suppliers Product Code: FH0023

### Reference Intake

Each 100g portion contains:



### Nutritional Information

Typical Values	Per 100g
Energy	994kJ 239kCal
Carbohydrates	25g
of which sugars	18g
Fat	14g
of which saturates	11g
Fibre	-g
Protein	1g
Salt	0.2g

### Allergy Information

Key: Contains May Contain



### Dietary Information

Key: Suitable for



### Allergen Statement

For allergens see ingredients in bold. May also contain allergens: milk, nuts and peanut.

### Ingredients

<b>Oat</b> base [water, <b>vegetable oil (sunflower)</b>], cocoa coating (29%) [sugar, cocoa butter†, vegetable fat (coconut), cocoa mass†, inulin, rice syrup, rice flour, emulsifier (lecithins (<b>soya</b>)), natural cocoa flavouring†, natural vanilla flavouring], glucose syrup, caramel sauce (7%) [glucose syrup, water, sugar, vegetable fat (coconut), coconut milk powder, emulsifier (lecithins), stabiliser (pectins), corn starch, salt], sugar, vegetable fat (coconut), cinder toffee pieces (3.5%) (sugar, glucose syrup, water), carob bean flour, soluble corn fibre, emulsifiers (mono - and diglycerides of fatty acids), caramelised sugar syrup (sugar, water), sea salt, natural flavouring, stabilisers (locust bean gum, guar gum).