

The information on the [Erudus System](#) has been supplied by the manufacturers of the products and, whilst the owners of the Erudus System take steps to ensure the information is regularly updated, they give no warranty and no guarantee that the information is accurate. Product information and ingredients may change, please always read product labels carefully in addition to using the information provided by Erudus One.

We do not accept liability for any inaccuracies or incorrect information contained on this site. Please visit <http://www.erudus.com/terms-and-conditions> for full terms and conditions.

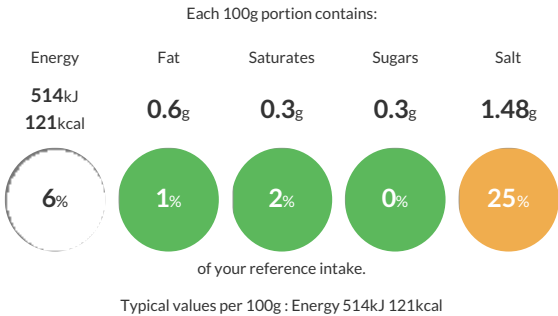
Whitby Seafoods Extra Large Scampi 10*450g

Short Product Name:
Whitby Seafoods XL Scampi

Whole scampi (langoustine) tails in a crisp, golden crumb. Contains one or more tails per piece and added water.

Traded Unit GTIN: 05016316916053 Internal GTIN: 5016316016050 Supplier : Whitby Seafoods Ltd Suppliers Product Code : 1605

Reference Intake



Nutritional Information


Typical Values	Per 100g
Energy	514kJ 121kCal
Carbohydrates	20g
of which sugars	0.3g
Fat	0.6g
of which saturates	0.3g
Fibre	1.7g
Protein	9.4g
Salt	1.48g

Allergy Information

Key: Contains May Contain


Contains Cereal/Gluten


Does Not Contain Milk


Does Not Contain Eggs


Does Not Contain Peanuts


Does Not Contain Nuts


Contains Crustaceans


Does Not Contain Mustard


May Contain Fish


Does Not Contain Lupin


Does Not Contain Sesame


Does Not Contain Celery


Does Not Contain Soya


May Contain Molluscs


Does Not Contain Sulphur Dioxide

Dietary Information

Key: Suitable for


NO DATA for Vegetarian


NO DATA for Vegan


May not be suitable for Kosher


May not be suitable for Halal


NO DATA for Coeliac

Allergen Statement
For allergens including cereals containing **GLUTEN** please see ingredients in **BOLD**. May also contain **FISH** and **MOLLUSCS**

Ingredients

Scampi (CRUSTACEANS) (40%), Breadcrumbs (WHEAT Flour (WHEAT Flour, Calcium Carbonate, Iron, Niacin, Thiamin), Salt, Yeast, Rapeseed oil), Batter (Water, WHEAT Flour (WHEAT Flour, Calcium Carbonate, Iron, Niacin, Thiamin), Salt), Water, Stabilisers: E450, E451, E452.