

The information on the [Erudus System](#) has been supplied by the manufacturers of the products and, whilst the owners of the Erudus System take steps to ensure the information is regularly updated, they give no warranty and no guarantee that the information is accurate. Product information and ingredients may change, please always read product labels carefully in addition to using the information provided by Erudus One.

We do not accept liability for any inaccuracies or incorrect information contained on this site. Please visit <http://www.erudus.com/terms-and-conditions> for full terms and conditions.

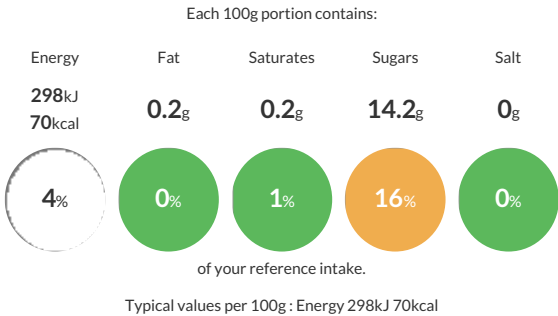
Blackcurrant Sorbet : 8 x 2 litre

Short Product Name:
Blackcurrant Sorbet

Blackcurrant Sorbet - Bursting with the flavour of juicy Blackcurrants, be transported to the countryside by the taste of this sweet berry sorbet.

Traded Unit GTIN: 5060016672795 Internal GTIN: 5060016672788 Supplier : Yorvale Ltd Suppliers Product Code : BLA8X2

Reference Intake



Nutritional Information

Typical Values	Per 100g
Energy	298kJ 70kCal
Carbohydrates	16.6g
of which sugars	14.2g
Fat	0.2g
of which saturates	0.2g
Fibre	-g
Protein	0g
Salt	0g

Allergy Information

Key: Contains May Contain

Gluten < 20ppm
Does Not Contain Cereal/Gluten

Does Not Contain Milk

Does Not Contain Eggs

Does Not Contain Peanuts

May Contain Nuts

Does Not Contain Crustaceans

Does Not Contain Mustard

Does Not Contain Fish

Does Not Contain Lupin

Does Not Contain Sesame

Does Not Contain Celery

Does Not Contain Soya

Does Not Contain Molluscs

Does Not Contain Sulphur Dioxide

Gluten Claim
Gluten content is less than 20ppm.

Allergen Statement
This product has been produced in a factory that uses nut ingredients.

Ingredients

Water, Sugar, Glucose Syrup, Blackcurrant Juice (6%), Stabiliser: Pectin, Mono & Diglycerides of Fatty Acids, Guar Gum, Sodium Citrate, Cellulose Gum.

Dietary Information

Key: Suitable for

Suitable for Vegetarian

Suitable for Vegan

May not be suitable for Kosher

May not be suitable for Halal

Suitable for Coeliac