

The information on the [Erudus System](#) has been supplied by the manufacturers of the products and, whilst the owners of the Erudus System take steps to ensure the information is regularly updated, they give no warranty and no guarantee that the information is accurate. Product information and ingredients may change, please always read product labels carefully in addition to using the information provided by Erudus One.

We do not accept liability for any inaccuracies or incorrect information contained on this site. Please visit <http://www.erudus.com/terms-and-conditions> for full terms and conditions.

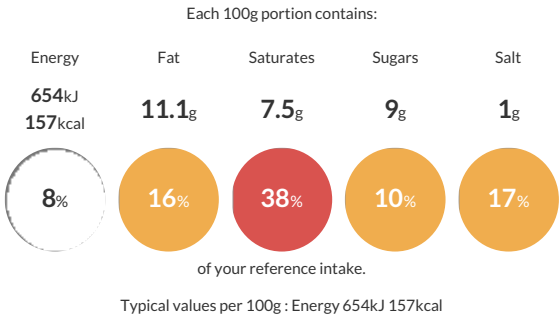
Sharwood's Korma Cooking Sauce 2kg

Short Product Name:
Korma Cooking Sauce

A rich, creamy, aromatic cooking sauce enriched with coconut and coriander.

Traded Unit GTIN: 05000117200176 Internal GTIN: 5000354200175 Supplier : Premier Foods Suppliers Product Code : 1004768

Reference Intake



Nutritional Information

Typical Values	Per 100g
Energy	654kJ 157kCal
Carbohydrates	11.3g
of which sugars	9g
Fat	11.1g
of which saturates	7.5g
Fibre	2.3g
Protein	1.9g
Salt	1g

Allergy Information

Key: Contains May Contain


Does Not Contain Cereal/Gluten


Contains Milk


Does Not Contain Eggs


Does Not Contain Peanuts


May Contain Nuts


Does Not Contain Crustaceans


Does Not Contain Mustard


Does Not Contain Fish


Does Not Contain Lupin


May Contain Sesame


Does Not Contain Celery


Does Not Contain Soya


Does Not Contain Molluscs


Does Not Contain Sulphur Dioxide

Allergen Statement
For allergens please see ingredients in **BOLD**.
May also contain Nuts and Sesame.

Ingredients

Water, Single Cream (**MILK**) (26%), Tomato Puree (8%), Sugar, Onion, Desiccated Coconut (5%), Modified Maize Starch, Tomatoes, Ginger Puree, Rapeseed Oil, Garlic Puree, Spices, Salt, Lactic Acid, Ground Coriander, Colour (Lutein), Citric Acid.

Dietary Information

Key: Suitable for


Suitable for Vegetarian


May not be suitable for Vegan


May not be suitable for Kosher


May not be suitable for Halal


May not be suitable for Coeliac