

The information on the [Erudus System](#) has been supplied by the manufacturers of the products and, whilst the owners of the Erudus System take steps to ensure the information is regularly updated, they give no warranty and no guarantee that the information is accurate. Product information and ingredients may change, please always read product labels carefully in addition to using the information provided by Erudus One.

We do not accept liability for any inaccuracies or incorrect information contained on this site. Please visit <http://www.erudus.com/terms-and-conditions> for full terms and conditions.

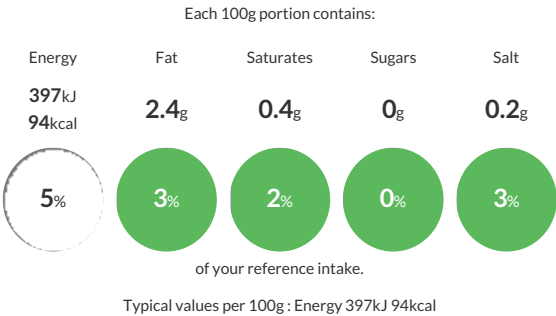
Whole farmed seabass gutted & gilled (6 x 300-400g)

Short Product Name:
Whole Seabass

Whole farmed seabass scaled, gutted and gilled (4 x 300-400g)

Traded Unit GTIN:  Internal GTIN: Supplier:  Suppliers Product Code: 

Reference Intake



Nutritional Information

Typical Values	Per 100g
Energy	397kJ 94kCal
Carbohydrates	0g
of which sugars	0g
Fat	2.4g
of which saturates	0.4g
Fibre	0g
Protein	17.9g
Salt	0.2g

Allergy Information

Key:  Contains  May Contain


Does Not Contain Cereal/Gluten


Does Not Contain Milk


Does Not Contain Eggs


Does Not Contain Peanuts


Does Not Contain Nuts


Does Not Contain Crustaceans


Does Not Contain Mustard


Contains Fish


Does Not Contain Lupin


Does Not Contain Sesame


Does Not Contain Celery


Does Not Contain Soya


Does Not Contain Molluscs


Does Not Contain Sulphur Dioxide

Dietary Information

Key:  Suitable for


NO DATA for Vegetarian


NO DATA for Vegan


May not be suitable for Kosher


May not be suitable for Halal


NO DATA for Coeliac

Ingredients

Seabass (*Dicentrarchus labrax*) (FISH).