

The information on the [Erudus System](#) has been supplied by the manufacturers of the products and, whilst the owners of the Erudus System take steps to ensure the information is regularly updated, they give no warranty and no guarantee that the information is accurate. Product information and ingredients may change, please always read product labels carefully in addition to using the information provided by Erudus One.

We do not accept liability for any inaccuracies or incorrect information contained on this site. Please visit <http://www.erudus.com/terms-and-conditions> for full terms and conditions.

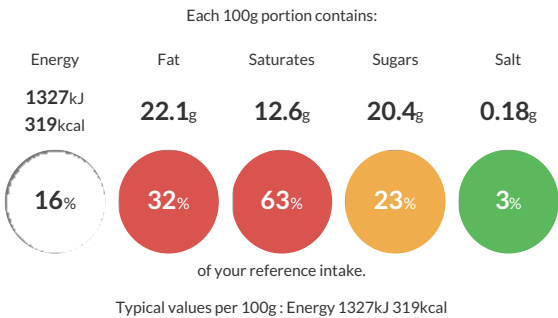
TWO CHOCOLATE CHRISTMAS TREE

Short Product Name:
Two Chocolate Christmas Tree

Cocoa sponge topped with a dark chocolate mousse, a second cocoa sponge and white chocolate mousse. Finishing : chocolate glaze with decor. Frozen.

Traded Unit GTIN: 13585681125005 Internal GTIN: Supplier : The Handmade Cake Co. Suppliers Product Code : 112500

Reference Intake



Nutritional Information

Typical Values	Per 100g
Energy	1327kJ 319kCal
Carbohydrates	23.6g
of which sugars	20.4g
Fat	22.1g
of which saturates	12.6g
Fibre	-g
Protein	4.9g
Salt	0.18g

Allergy Information

Key: Contains May Contain


Contains
Cereal/Gluten


Contains
Milk


Contains
Eggs


Does Not
Contain
Peanuts


May Contain
Nuts


Does Not
Contain
Crustaceans


Does Not
Contain
Mustard


Does Not
Contain
Fish


Does Not
Contain
Lupin


Does Not
Contain
Sesame


Does Not
Contain
Celery


Contains
Soya


Does Not
Contain
Molluscs


Does Not
Contain
Sulphur
Dioxide

Allergen Statement
May contain NUTS.

Ingredients

UHT CREAM (CREAM, stabilizer:E407), water, whole EGG, sugar, dark chocolate 8,00%(cocoa mass, sugar, cocoa butter, emulsifier : lecithins (SOYA)), cocoa powder 5,88%, butter (MILK), white chocolate 3,64%(sugar, cocoa butter, whole MILK powder, emulsifier : lecithins (SOYA), natural vanilla flavour), WHEAT flour, rapeseed oil, whole MILK powder, maize starch, gelling agent (pectine E440i, sugar), emulsifier : E471, decoration (cocoa butter, sugar, colour: E100, colouring foodstuff : concentrated radish, blackcurrant and apple).


Dietary Information


Key: Suitable for


NO DATA for
Vegetarian


NO DATA for
Vegan


NO DATA for
Kosher


NO DATA for
Halal


NO DATA for
Coeliac