

Supplier's Product Code :
 Product Added :
 Last Updated by Supplier :
 erudus id :

CHH275
 11 March 2026
 11 March 2026
 4cc926fb44144b9b993ecf88552c8452



The information on the **Erudus System** has been supplied by the manufacturers of the products and, whilst the owners of the Erudus System take steps to ensure the information is regularly updated, they give no warranty and no guarantee that the information is accurate. Product information and ingredients may change, please always read product labels carefully in addition to using the information provided by Erudus One.

We do not accept liability for any inaccuracies or incorrect information contained on this site. Please visit <http://www.erudus.com/terms-and-conditions> for full terms and conditions.

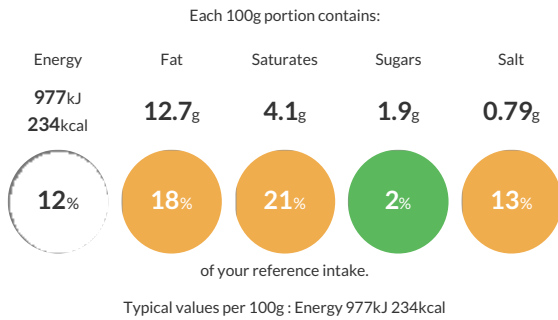
Chicken & Ham Pie (275g)

Short Product Name:
 Chicken & Ham Pie

Chicken & Ham Pie (275g)

Traded Unit GTIN: Internal GTIN: Supplier: **Bell House Foods Limited** Suppliers Product Code: **CHH275**

Reference Intake



Nutritional Information

Typical Values	Per 100g
Energy	977kJ 234kCal
Carbohydrates	20.5g
of which sugars	1.9g
Fat	12.7g
of which saturates	4.1g
Fibre	1.1g
Protein	8.8g
Salt	0.79g

Allergy Information

Key: **Contains** **May Contain**

Contains Cereal/Gluten	Contains Milk	Does Not Contain Eggs	Does Not Contain Peanuts	Does Not Contain Nuts	Does Not Contain Crustaceans	Does Not Contain Mustard
Does Not Contain Fish	Does Not Contain Lupin	Does Not Contain Sesame	Does Not Contain Celery	Does Not Contain Soya	Does Not Contain Molluscs	Does Not Contain Sulphur Dioxide

Dietary Information

Key: **Suitable for**

May not be suitable for Vegetarian	May not be suitable for Vegan	May not be suitable for Kosher	May not be suitable for Halal	NO DATA for Coeliac
------------------------------------	-------------------------------	--------------------------------	-------------------------------	---------------------

Ingredients

Filling: Chicken (21%), Ham (16%), Onion, Leek, Pea, Cream (**MILK**), **MILK**, Chicken Stock (Water, Chicken Extract, Flavourings, Glucose Syrup, Salt, Yeast Extract, Vegetable Oil), Water, Maize Starch, Salt, Pepper.
 Pastry: Wheat Flour (**WHEAT**, Calcium Carbonate, Iron, Niacin, Thiamin) Vegetable Shortening (Palm & Rapeseed Oils), Margarine (Vegetable Oil, Water, Salt, Emulsifiers, (Mono & Diglycerides of fatty acids) Preservatives (Potassium Sorbate, Citric Acid), Colour (Annatto Bixin (E160b(i)) & Curcmin) Flavouring), Water, Salt,