

Supplier's Product Code :  
Product Added :  
Last Updated by Supplier :  
erudus id :

64835451  
26 June 2026  
26 June 2026  
4d0793b90b8a4717aca7ee2545541e5f



The information on the **Erudus System** has been supplied by the manufacturers of the products and, whilst the owners of the Erudus System take steps to ensure the information is regularly updated, they give no warranty and no guarantee that the information is accurate. Product information and ingredients may change, please always read product labels carefully in addition to using the information provided by Erudus One.

We do not accept liability for any inaccuracies or incorrect information contained on this site. Please visit <http://www.erudus.com/terms-and-conditions> for full terms and conditions.

## Haribo Push-Up Ice Cream Lolly 85 ml

Short Product Name:

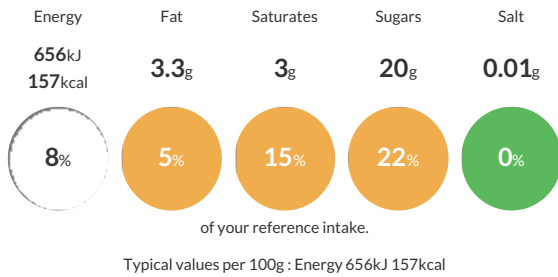
Haribo Push-Up Ice Cream Lolly 85 ml

Vanilla flavour ice cream with strawberry sauce (33%) and fruit flavour gummy bears (6.5%).

Traded Unit GTIN: **8711327667532** Internal GTIN: **8711327667525** Supplier: **Magnum ICC UK Ltd** Suppliers Product Code: **64835451**

### Reference Intake

Each 100g portion contains:



### Nutritional Information

Typical Values	Per 100g
Energy	656kJ 157kCal
Carbohydrates	27g
of which sugars	20g
Fat	3.3g
of which saturates	3g
Fibre	3.1g
Protein	2.1g
Salt	0.01g

### Allergy Information

Key: **Contains** **May Contain**



### Dietary Information

Key: **Suitable for**



### Ingredients

Reconstituted skimmed **MILK**, water, strawberry puree (13%), fruit flavour gummy bears (glucose syrup, sugar, gelatine, dextrose, fruit juice from concentrate (apple, raspberry, strawberry, orange, lemon, pineapple), acidity regulator (citric acid), fruit and plant concentrates (safflower, spirulina, apple, elderberry, orange, blackcurrant, kiwi, lemon, aronia, mango, grape, passionfruit), sunflower oil, flavourings, elderberry extract, glazing agents (white and yellow beeswax)), glucose syrup, fructose, sugar, soluble corn fibre, coconut fat, whey powder (**MILK**), dextrose, emulsifier (mono- and diglycerides of fatty acids), stabilisers (locust bean gum, guar gum, carrageenan, sodium alginate), acidity regulator (citric acid), red beetroot juice concentrate, flavourings.