

The information on the [Erudus System](#) has been supplied by the manufacturers of the products and, whilst the owners of the Erudus System take steps to ensure the information is regularly updated, they give no warranty and no guarantee that the information is accurate. Product information and ingredients may change, please always read product labels carefully in addition to using the information provided by Erudus One.

We do not accept liability for any inaccuracies or incorrect information contained on this site. Please visit <http://www.erudus.com/terms-and-conditions> for full terms and conditions.

CADBURY 290G HEROES 6CA

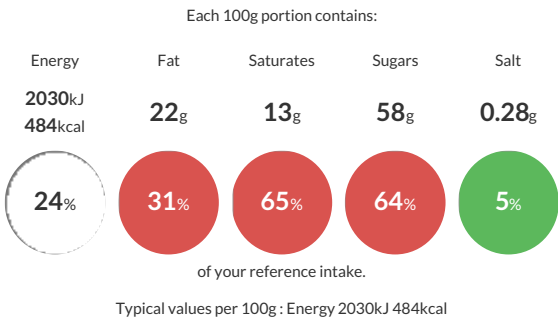
**Warning!** This Product Specification complies with EU Food Information Regulation No. 1169/2011 (FIR) however we are still awaiting further product attributes to complete the full Erudus specification.

Short Product Name:  
CADBURY 290G HEROES

An assortment of chocolates and toffees.

Traded Unit GTIN: 07622210954664 Internal GTIN: 07622210959874 Supplier : Mondelez UK Ltd Suppliers Product Code : 4071733

Reference Intake



Nutritional Information

Typical Values	Per 100g
Energy	2030kJ 484kCal
Carbohydrates	66g
of which sugars	58g
Fat	22g
of which saturates	13g
Fibre	1.4g
Protein	4.6g
Salt	0.28g

Allergy Information

Key: Contains May Contain

  
Contains Cereal/Gluten

  
Contains Milk

  
Contains Eggs

  
May Contain Peanuts

  
May Contain Nuts

  
Does Not Contain Crustaceans

  
Does Not Contain Mustard

  
Does Not Contain Fish

  
Does Not Contain Lupin

  
Does Not Contain Sesame

  
Does Not Contain Celery

  
Contains Soya

  
Does Not Contain Molluscs

  
Does Not Contain Sulphur Dioxide

Dietary Information

Key: Suitable for

  
Suitable for Vegetarian

  
May not be suitable for Vegan

  
May not be suitable for Kosher

  
May not be suitable for Halal

  
NO DATA for Coeliac

Allergen Statement  
ALL UNITS MAY CONTAIN NUTS. DINKY DECKER UNIT MAY CONTAIN PEANUTS, NUTS AND WHEAT.

Ingredients

MILK, sugar, glucose syrup, cocoa butter, cocoa mass, vegetable fats (palm, shea), whey powder (from MILK), glucose-fructose syrup, skimmed MILK powder, rice flour, whey permeate powder (from MILK), whole MILK powder, emulsifiers [E442, E471, lecithins (contain SOYA), E476], MILK fat, stabilisers (sorbitols, E509), humectant (glycerol), flavourings (contain MILK), invert sugar syrup, fat-reduced cocoa powder, salt, BARLEY malt extract, acidity regulator (sodium carbonates), dried EGG whites, acid (citric acid), colours (carotenes, paprika extract, E150d).