

The information on the [Erudus System](#) has been supplied by the manufacturers of the products and, whilst the owners of the Erudus System take steps to ensure the information is regularly updated, they give no warranty and no guarantee that the information is accurate. Product information and ingredients may change, please always read product labels carefully in addition to using the information provided by Erudus One.

We do not accept liability for any inaccuracies or incorrect information contained on this site. Please visit <http://www.erudus.com/terms-and-conditions> for full terms and conditions.

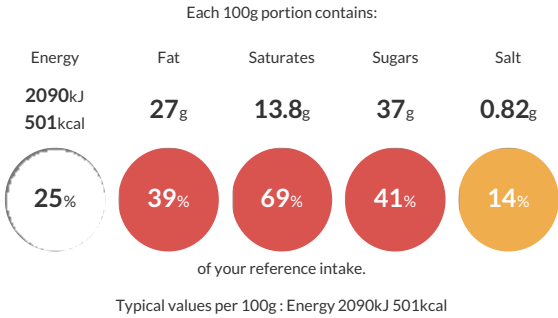
HONEYCOMB TIFFIN (1 x 12 ptn)

Short Product Name:

Crushed digestive biscuits, toffee pieces and honeycomb, bound together in a milk chocolate toffee fudge mixture, topped with milk chocolate and sprinkled with honeycomb and toffee pieces..

Traded Unit GTIN: **5060044074509** Internal GTIN: Supplier : **The Handmade Cake Co.** Suppliers Product Code : **074509**

Reference Intake



Nutritional Information

Typical Values	Per 100g
Energy	2090kJ 501kCal
Carbohydrates	56.7g
of which sugars	37g
Fat	27g
of which saturates	13.8g
Fibre	2.1g
Protein	6.3g
Salt	0.82g

Allergy Information

Key: **Contains** **May Contain**


Contains Cereal/Gluten


Contains Milk


May Contain Eggs


Does Not Contain Peanuts


May Contain Nuts


Does Not Contain Crustaceans


Does Not Contain Mustard


Does Not Contain Fish


Does Not Contain Lupin


Does Not Contain Sesame


Does Not Contain Celery


Contains Soya


Does Not Contain Molluscs


Does Not Contain Sulphur Dioxide

Dietary Information

Key: **Suitable for**


Suitable for Vegetarian


May not be suitable for Vegan


May not be suitable for Kosher


May not be suitable for Halal


May not be suitable for Coeliac

Allergen Statement

For allergens, including cereals containing gluten, see ingredient in **BOLD**. This product may contain traces of nuts and eggs as it has been made in a bakery that uses these ingredients.

Ingredients

Digestive Biscuits [**WHEAT** Flour (with Calcium Carbonate, Iron, Niacin, Thiamin), Palm Oil, Sugar, Wholemeal **WHEAT** Flour, Partially Inverted Sugar Syrup, Raising Agents (E500, E503), Salt], Milk Chocolate (26%) [Sugar, Cocoa Butter, Whole **MILK** Powder, Cocoa Mass, Emulsifier (**SOYA** Lecithin), Natural Vanilla Flavouring], Sweetened Condensed **MILK**, Vegetable Margarine [Palm Oil, Rapeseed Oil, Water, Salt, Emulsifier (E471), Natural Flavouring], Honeycomb Pieces (2.5%) [Sugar, Glucose Syrup, Water, Raising Agent (Bicarbonate of Soda), Shea Kernel Oil, Palm Oil, Emulsifier (E322)], Toffee Pieces (2.3%) [Sugar, Glucose, Sweetened Condensed **MILK**, Palm Oil, Butter Oil (**MILK**), Anti-Caking Agent (Cellulose), Natural Flavouring, Glazing Agent (Carnauba Wax)], Toffee Sauce (2.1%) [Glucose Syrup, Invert Sugar Syrup, Sweetened Condensed Skimmed **MILK**, Sugar, Butter Oil (**MILK**), Water, Colour (Caramel), Stabiliser (Pectin), Natural Flavouring], Toffee Flavouring (0.1%).