

The information on the [Erudus System](#) has been supplied by the manufacturers of the products and, whilst the owners of the Erudus System take steps to ensure the information is regularly updated, they give no warranty and no guarantee that the information is accurate. Product information and ingredients may change, please always read product labels carefully in addition to using the information provided by Erudus One.

We do not accept liability for any inaccuracies or incorrect information contained on this site. Please visit <http://www.erudus.com/terms-and-conditions> for full terms and conditions.

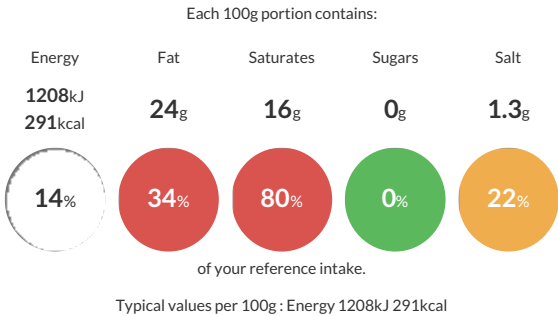
Brie West Country Croxton Manor 1.1 Kg

Short Product Name:
Brie

Creamy ripening brie, made using pasteurised Cow's milk.

Traded Unit GTIN: - Internal GTIN: Supplier : Cheese Cellar (Harvey & Brockless) Suppliers Product Code : EC738

Reference Intake



Nutritional Information

Typical Values	Per 100g
Energy	1208kJ 291kCal
Carbohydrates	0g
of which sugars	0g
Fat	24g
of which saturates	16g
Fibre	0g
Protein	18.3g
Salt	1.3g

Allergy Information

Key: Contains May Contain

Gluten < 20ppm
Does Not Contain Cereal/Gluten

Contains Milk

Does Not Contain Eggs

Does Not Contain Peanuts

Does Not Contain Nuts

Does Not Contain Crustaceans

Does Not Contain Mustard

Does Not Contain Fish

Does Not Contain Lupin

Does Not Contain Sesame

Does Not Contain Celery

Does Not Contain Soya

Does Not Contain Molluscs

Does Not Contain Sulphur Dioxide

Gluten Claim
Gluten content is less than 20ppm.

Allergen Statement
Contains Milk

Ingredients

Pasteurised Cow's MILK, Skimmed MILK Concentrate, Salt, Starter Culture, Coagulant, Yeast Culture, Mould Culture.

Dietary Information

Key: Suitable for

Suitable for Vegetarian

NO DATA for Vegan

May not be suitable for Kosher

May not be suitable for Halal

Suitable for Coeliac