

The information on the [Erudus System](#) has been supplied by the manufacturers of the products and, whilst the owners of the Erudus System take steps to ensure the information is regularly updated, they give no warranty and no guarantee that the information is accurate. Product information and ingredients may change, please always read product labels carefully in addition to using the information provided by Erudus One.

We do not accept liability for any inaccuracies or incorrect information contained on this site. Please visit <http://www.erudus.com/terms-and-conditions> for full terms and conditions.

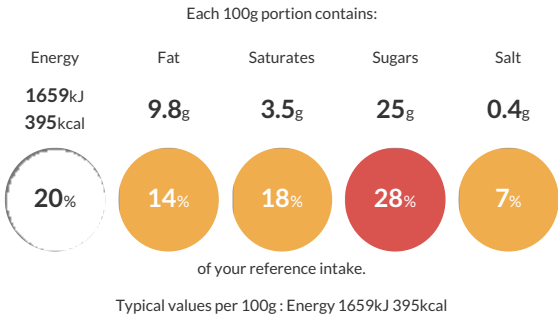
SIMPLY SCRUMMY REDUCED SUGAR MINI 27G GINGERBREAD MAN

Short Product Name:  
Simply Scrummy Reduced Sugar Mini 27g Gingerbread Man

Individually wrapped School Compliant Mini Gingerbread Man

Traded Unit GTIN: 05024879010187 Internal GTIN: 5024879010088 Supplier : Handmade Speciality Products Limited Suppliers Product Code : RSGMAN

Reference Intake



Nutritional Information

Typical Values	Per 100g
Energy	1659kJ 395kCal
Carbohydrates	65g
of which sugars	25g
Fat	9.8g
of which saturates	3.5g
Fibre	1.4g
Protein	5.7g
Salt	0.4g

Allergy Information

Key: Contains May Contain

  
Contains  
Cereal/Gluten

  
May Contain  
Milk

  
May Contain  
Eggs

  
Does Not  
Contain  
Peanuts

  
May Contain  
Nuts

  
Does Not  
Contain  
Crustaceans

  
Does Not  
Contain  
Mustard

  
Does Not  
Contain  
Fish

  
Does Not  
Contain  
Lupin

  
Does Not  
Contain  
Sesame

  
Does Not  
Contain  
Celery

  
May Contain  
Soya

  
Does Not  
Contain  
Molluscs

  
Does Not  
Contain  
Sulphur  
Dioxide

Dietary Information

Key: Suitable for

  
Suitable for  
Vegetarian

  
May not be  
suitable for  
Vegan

  
May not be  
suitable for  
Kosher

  
May not be  
suitable for  
Halal

  
NO DATA for  
Coeliac

**Allergen Statement**  
For allergens, including cereals containing gluten, see ingredients in bold. May also contain Nuts, Soya, Egg, Milk and other cereals containing gluten.

Ingredients

Fortified **WHEAT** Flour (**WHEAT** Flour, Iron, Thiamin, Nicotinic Acid, Calcium Carbonate), Sugar, Oligofructose (Chicory), Fructo-Oligosaccharide (Chicory), Margarine (Vegetable Oils (Palm, Rapeseed), Water, Salt, Emulsifier (Mono- and diglycerides of fatty acids), Colours (Annatto Bixin, Curcumin), Natural Flavouring), Water, Ginger (1%), Raising Agent (Sodium Bicarbonate).