

The information on the [Erudus System](#) has been supplied by the manufacturers of the products and, whilst the owners of the Erudus System take steps to ensure the information is regularly updated, they give no warranty and no guarantee that the information is accurate. Product information and ingredients may change, please always read product labels carefully in addition to using the information provided by Erudus One.

We do not accept liability for any inaccuracies or incorrect information contained on this site. Please visit <http://www.erudus.com/terms-and-conditions> for full terms and conditions.

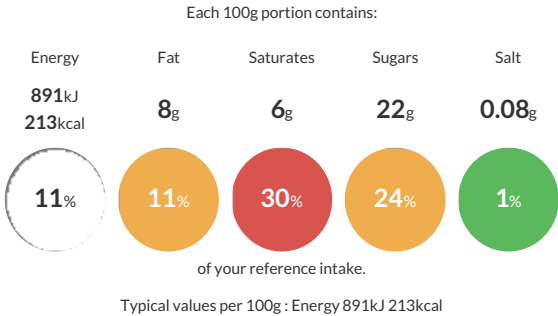
## Smarties SMART POPUP20x85ml RFA-MB GB

Short Product Name:

Vanilla ice cream with milk chocolate pieces in a crisp sugar shell.

Traded Unit GTIN: 8436575295411 Internal GTIN: 8436575295404 Supplier : Froneri Ice Cream UK Limited Suppliers Product Code : 31025852

### Reference Intake



### Nutritional Information

Typical Values	Per 100g
Energy	891kJ 213kCal
Carbohydrates	30g
of which sugars	22g
Fat	8g
of which saturates	6g
Fibre	5.4g
Protein	2.6g
Salt	0.08g

### Allergy Information

Key: Contains May Contain

  
Contains Cereal/Gluten

  
Contains Milk

  
Does Not Contain Eggs

  
Does Not Contain Peanuts

  
May Contain Nuts

  
Does Not Contain Crustaceans

  
Does Not Contain Mustard

  
Does Not Contain Fish

  
Does Not Contain Lupin

  
Does Not Contain Sesame

  
Does Not Contain Celery

  
May Contain Soya

  
Does Not Contain Molluscs

  
Does Not Contain Sulphur Dioxide

### Dietary Information

Key: Suitable for

  
May not be suitable for Vegetarian

  
May not be suitable for Vegan

  
May not be suitable for Kosher

  
May not be suitable for Halal

  
May not be suitable for Coeliac

### Ingredients

Reconstituted skimmed milk powder, Glucose syrup, Invert sugar syrup, Sugar, Maltodextrin, Vegetable oils (Coconut, Palm, Shea), Water, Skimmed milk powder, Cocoa butter, Cocoa mass, wheat flour, Lactose and proteins from whey (from milk), Butter oil (from milk), Emulsifiers (Mono- and diglycerides of fatty acids, Lecithins), Stabilisers (Locust bean gum, Guar gum), Rice starch, Maize protein, Flavouring, Colours (Beetroot red, Carotenes, Curcumin), Spirulina concentrate, Glazing agents (Carnauba wax, Beeswax white), Vegetable concentrates (Safflower, Radish), barley malt extract.