

The information on the [Erudus System](#) has been supplied by the manufacturers of the products and, whilst the owners of the Erudus System take steps to ensure the information is regularly updated, they give no warranty and no guarantee that the information is accurate. Product information and ingredients may change, please always read product labels carefully in addition to using the information provided by Erudus One.

We do not accept liability for any inaccuracies or incorrect information contained on this site. Please visit <http://www.erudus.com/terms-and-conditions> for full terms and conditions.

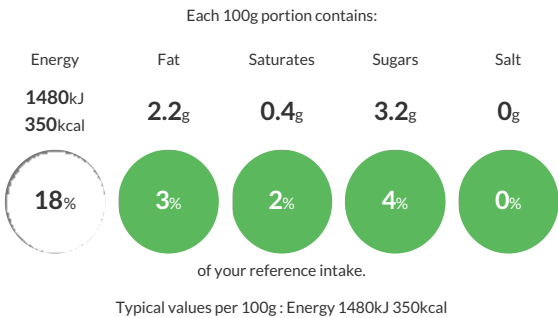
Sysco Classic Wholewheat Fusilli

Short Product Name:
Wholewheat Fusilli

Pasta from 100% durum wholewheat

Traded Unit GTIN: 05024333259350 Internal GTIN: 5024333259343 Supplier : Sysco GB Limited Suppliers Product Code : 146181

Reference Intake



Nutritional Information

Typical Values	Per 100g
Energy	1480kJ 350kCal
Carbohydrates	67g
of which sugars	3.2g
Fat	2.2g
of which saturates	0.4g
Fibre	7g
Protein	12g
Salt	0g

Allergy Information

Key: Contains May Contain




Contains
Cereal/Gluten



Does Not
Contain
Milk



Does Not
Contain
Eggs




Does Not
Contain
Peanuts



Does Not
Contain
Nuts



Does Not
Contain
Crustaceans



May Contain
Mustard



Does Not
Contain
Fish



Does Not
Contain
Lupin



Does Not
Contain
Sesame




Does Not
Contain
Celery



May Contain
Soya



Does Not
Contain
Molluscs



Does Not
Contain
Sulphur
Dioxide

Dietary Information

Key: Suitable for



Suitable for
Vegetarian



Suitable for
Vegan



NO DATA for
Kosher



NO DATA for
Halal



NO DATA for
Coeliac

Ingredients

Durum Whole Wheat Semolina (100%).