

Supplier's Product Code :
 Product Added :
 Last Updated by Supplier :
 erudus id :

CTRCFR149/0002
 11 May 2026
 12 May 2026
 53502c814933431dacc55a5f27351b0



The information on the Erudus System has been supplied by the manufacturers of the products and, whilst the owners of the Erudus System take steps to ensure the information is regularly updated, they give no warranty and no guarantee that the information is accurate. Product information and ingredients may change, please always read product labels carefully in addition to using the information provided by Erudus One.

We do not accept liability for any inaccuracies or incorrect information contained on this site. Please visit <http://www.erudus.com/terms-and-conditions> for full terms and conditions.

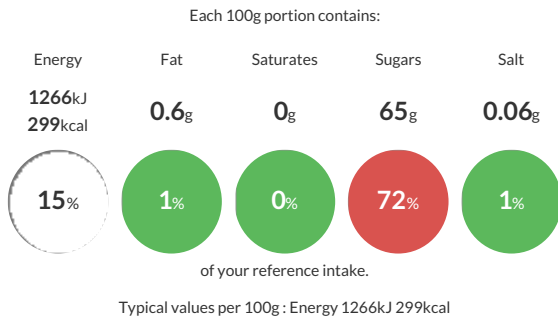
Fig Relish 2kg

Short Product Name:
 Marinated, Spiced Fig Relish

The sweetness of figs with a slight tartness

Traded Unit GTIN: 5060092695824 Internal GTIN: 5060092695824 Supplier: Stokes Sauces Suppliers Product Code: CTCRCFR149/0002

Reference Intake



Nutritional Information

Typical Values	Per 100g
Energy	1266kJ 299kCal
Carbohydrates	65g
of which sugars	65g
Fat	0.6g
of which saturates	0g
Fibre	4.4g
Protein	1.4g
Salt	0.06g

Allergy Information

Key: Contains May Contain

Does Not Contain Cereal/Gluten	Does Not Contain Milk	Does Not Contain Eggs	Does Not Contain Peanuts	Does Not Contain Nuts	Does Not Contain Crustaceans	Does Not Contain Mustard
Does Not Contain Fish	Does Not Contain Lupin	Does Not Contain Sesame	Does Not Contain Celery	Does Not Contain Soya	Does Not Contain Molluscs	Does Not Contain Sulphur Dioxide

Dietary Information

Key: Suitable for

Suitable for Vegetarian	Suitable for Vegan	May not be suitable for Kosher	May not be suitable for Halal	NO DATA for Coeliac
-------------------------	--------------------	--------------------------------	-------------------------------	---------------------

Ingredients

Marinated Figs (60%) (Cider Vinegar, Dried Figs, Mixed Spice), Sugar and Cane Molasses (35%), Water, Spice.