

The information on the [Erudus System](#) has been supplied by the manufacturers of the products and, whilst the owners of the Erudus System take steps to ensure the information is regularly updated, they give no warranty and no guarantee that the information is accurate. Product information and ingredients may change, please always read product labels carefully in addition to using the information provided by Erudus One.

We do not accept liability for any inaccuracies or incorrect information contained on this site. Please visit <http://www.erudus.com/terms-and-conditions> for full terms and conditions.

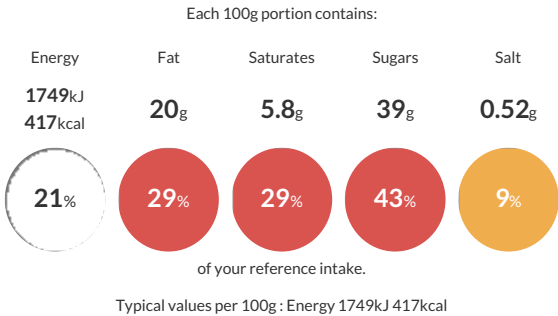
Red Velvet Traycake (1x18 ptn)

Short Product Name:
Red Velvet Traycake

A red velvet vanilla flavour sponge with a hint of cocoa, filled and topped with cream cheese icing and finished with a sprinkle of red velvet crumb.

Traded Unit GTIN: 5060044072444 Internal GTIN: Supplier: The Handmade Cake Co. Suppliers Product Code: F072444

Reference Intake



Nutritional Information

Typical Values	Per 100g
Energy	1749kJ 417kCal
Carbohydrates	54.3g
of which sugars	39g
Fat	20g
of which saturates	5.8g
Fibre	-g
Protein	4.2g
Salt	0.52g

Allergy Information

Key: Contains May Contain


Contains
Cereal/Gluten


Contains
Milk


Contains
Eggs


Does Not
Contain
Peanuts


May Contain
Nuts


Does Not
Contain
Crustaceans


Does Not
Contain
Mustard


Does Not
Contain
Fish


Does Not
Contain
Lupin


Does Not
Contain
Sesame


Does Not
Contain
Celery


Does Not
Contain
Soya


Does Not
Contain
Molluscs


Does Not
Contain
Sulphur
Dioxide

Dietary Information

Key: Suitable for


Suitable for
Vegetarian


May not be
suitable for
Vegan


May not be
suitable for
Kosher


May not be
suitable for
Halal


NO DATA for
Coeliac

Ingredients

Sugar, **WHEAT** Flour (with Calcium Carbonate, Niacin, Iron, Thiamin), Pasteurised Free Range **EGG**, Rapeseed Oil, Full Fat Soft Cheese (9%) [Full Fat Soft Cheese (**MILK**), Thickener (Guar Gum)], Salted Butter [Butter (**MILK**), Salt], Concentrated Beetroot Juice, Water, Cornflour, Baking Powder [Raising Agents (E575, E500(ii), E336(i)), Maize Starch], Fat Reduced Cocoa Powder (0.9%), Skimmed **MILK** Powder, Colour (Paprika Extract), Vanilla Flavouring, Concentrated Lemon Juice.