

The information on the [Erudus System](#) has been supplied by the manufacturers of the products and, whilst the owners of the Erudus System take steps to ensure the information is regularly updated, they give no warranty and no guarantee that the information is accurate. Product information and ingredients may change, please always read product labels carefully in addition to using the information provided by Erudus One.

We do not accept liability for any inaccuracies or incorrect information contained on this site. Please visit <http://www.erudus.com/terms-and-conditions> for full terms and conditions.

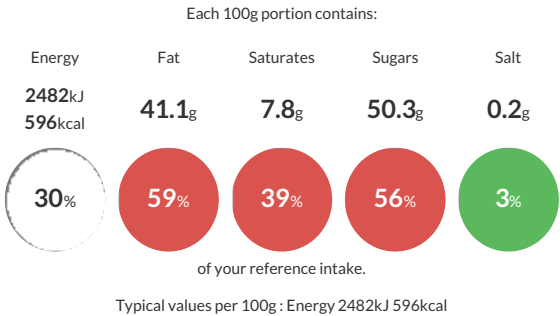
Simply Luxury White Chocolate with Hazelnut Flavour Topping Sauce 1kg

Short Product Name:
Simply Luxury White Chocolate with Hazelnut Flavour Topping Sauce 1kg

Luxury White Chocolate with Hazelnut Flavour Topping Sauce – A thick white sauce with the flavour and aroma typical of white chocolate (10%) and hazelnut.

Traded Unit GTIN: 15060877200332 Internal GTIN: 5060877200335 Supplier : IBC Simply Suppliers Product Code : SAUCEWHITEHAZ1KG

Reference Intake



Nutritional Information

Typical Values	Per 100g
Energy	2482kJ 596kCal
Carbohydrates	51.3g
of which sugars	50.3g
Fat	41.1g
of which saturates	7.8g
Fibre	-g
Protein	5.3g
Salt	0.2g

Allergy Information

Key: Contains May Contain


Does Not Contain Cereal/Gluten


Contains Milk


Does Not Contain Eggs


Does Not Contain Peanuts


May Contain Nuts


Does Not Contain Crustaceans


Does Not Contain Mustard


Does Not Contain Fish


Does Not Contain Lupin


Does Not Contain Sesame


Does Not Contain Celery


Contains Soya


Does Not Contain Molluscs


Does Not Contain Sulphur Dioxide


Allergen Statement
May contain traces of nuts


Ingredients


Vegetable fats (Sunflower, Palm), Sugar, White chocolate 10% (Whole **milk** powder, Sugar, Cocoa butter), Whole **milk** powder, Whey powder (**Milk**), Emulsifier: **Soya** lecithin, Flavourings, Antioxidant: Rosemary extract.


Dietary Information


Key: Suitable for


Suitable for Vegetarian


May not be suitable for Vegan


Suitable for Kosher


Suitable for Halal


NO DATA for Coeliac