

Supplier's Product Code :  
 Product Added :  
 Last Updated by Supplier :  
 erudus id :

FI0109  
 20 November 2025  
 20 November 2025  
 55b994ea219a489a8071e29479846680



The information on the Erudus System has been supplied by the manufacturers of the products and, whilst the owners of the Erudus System take steps to ensure the information is regularly updated, they give no warranty and no guarantee that the information is accurate. Product information and ingredients may change, please always read product labels carefully in addition to using the information provided by Erudus One.

We do not accept liability for any inaccuracies or incorrect information contained on this site. Please visit <http://www.erudus.com/terms-and-conditions> for full terms and conditions.

## Jude's Truly Chocolate Ice Cream - 6 x 4L

Short Product Name:

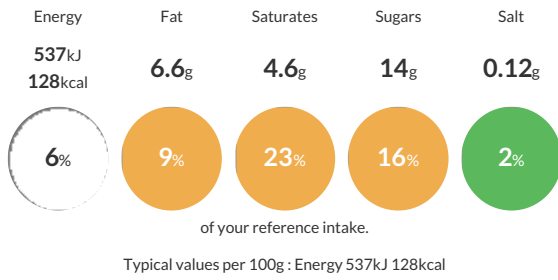
Jude's Truly Chocolate Ice Cream - 6 x 4L

Chocolate Ice Cream

Traded Unit GTIN: 05060081110215 Internal GTIN: 5060081110642 Supplier: Judes Ices Suppliers Product Code: FI0109

### Reference Intake

Each 100g portion contains:



### Nutritional Information

Typical Values	Per 100g
Energy	537kJ 128kCal
Carbohydrates	14g
of which sugars	14g
Fat	6.6g
of which saturates	4.6g
Fibre	-g
Protein	2.8g
Salt	0.12g

### Allergy Information

Key: Contains May Contain

Does Not Contain Cereal/Gluten	<span style="border: 1px solid red; border-radius: 50%; padding: 2px;">Contains</span> Milk	Does Not Contain Eggs	Does Not Contain Peanuts	Does Not Contain Nuts	Does Not Contain Crustaceans	Does Not Contain Mustard
Does Not Contain Fish	Does Not Contain Lupin	Does Not Contain Sesame	Does Not Contain Celery	Does Not Contain Soya	Does Not Contain Molluscs	Does Not Contain Sulphur Dioxide

### Dietary Information

Key: Suitable for

Suitable for Vegetarian	NO DATA for Vegan	May not be suitable for Kosher	May not be suitable for Halal	NO DATA for Coeliac
-------------------------	-------------------	--------------------------------	-------------------------------	---------------------

### Allergen Statement

For allergens see ingredients in bold.

### Ingredients

fresh whole **milk**, sugar, fresh double cream (**milk**), skimmed **milk** powder, chocolate powder (sugar, cocoa mass, fat-reduced cocoa powder, natural vanilla flavouring), coconut oil, cocoa powder, dextrose, fat-reduced cocoa powder, emulsifier (mono- and diglycerides of fatty acids), stabilisers (locust bean gum, guar gum), Bourbon vanilla extract.