

The information on the [Erudus System](#) has been supplied by the manufacturers of the products and, whilst the owners of the Erudus System take steps to ensure the information is regularly updated, they give no warranty and no guarantee that the information is accurate. Product information and ingredients may change, please always read product labels carefully in addition to using the information provided by Erudus One.

We do not accept liability for any inaccuracies or incorrect information contained on this site. Please visit <http://www.erudus.com/terms-and-conditions> for full terms and conditions.

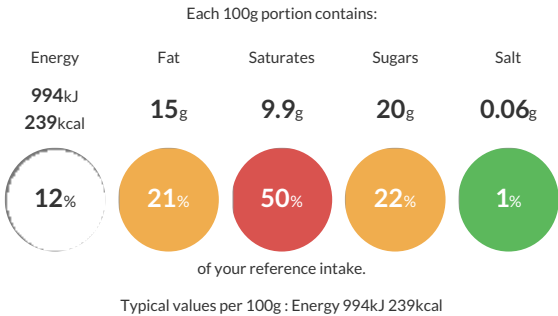
Jude's Triple Chocolate Stickbars 20 x 80ml

Short Product Name:
Triple Chocolate Stickbars

Chocolate ice cream with cocoa sauce, coated with Belgian milk chocolate, and cocoa biscuit pieces.

Traded Unit GTIN: 05060081116217 Internal GTIN: 5060081116071 Supplier : Jude's Ices Suppliers Product Code : FH0014

Reference Intake



Nutritional Information

Typical Values	Per 100g
Energy	994kJ 239kCal
Carbohydrates	23g
of which sugars	20g
Fat	15g
of which saturates	9.9g
Fibre	-g
Protein	2.4g
Salt	0.06g

Allergy Information

Key: Contains May Contain


Contains Cereal/Gluten


Contains Milk


Does Not Contain Eggs


May Contain Peanuts


May Contain Nuts


Does Not Contain Crustaceans


Does Not Contain Mustard


Does Not Contain Fish


Does Not Contain Lupin


Does Not Contain Sesame


Does Not Contain Celery


Contains Soya


Does Not Contain Molluscs


Does Not Contain Sulphur Dioxide

Dietary Information

Key: Suitable for


Suitable for Vegetarian


May not be suitable for Vegan


May not be suitable for Kosher


May not be suitable for Halal


May not be suitable for Coeliac

Allergen Statement
May contain NUTS and PEANUT.

Ingredients

skimmed MILK, Belgian MILK chocolate (29.5%) [sugar, cocoa butter†, cocoa mass†, whole MILK powder, anhydrous MILK fat, emulsifier (lecithins (SOYA)), Bourbon vanilla extract], cocoa sauce (7%) (sugar, water, cocoa powder, salt, cocoa extract), sugar, vegetable fat (coconut), cocoa biscuit pieces (3%) (WHEAT flour, sugar, sunflower oil, fat-reduced cocoa powder, salt), glucose syrup, cocoa powder (3%), Belgian dark chocolate (2.9%) [cocoa mass†, sugar, cocoa butter†, emulsifier (lecithins (SOYA)), Bourbon vanilla extract], lactose (MILK) and MILK protein, emulsifier (mono- and diglycerides of fatty acids), stabilisers (locust bean gum, guar gum).