

Supplier's Product Code :
 Product Added :
 Last Updated by Supplier :
 erudus id :

SOF
 25 November 2025
 25 November 2025
 5bb2c6392c344a35b43de305ce87e078



The information on the **Erudus System** has been supplied by the manufacturers of the products and, whilst the owners of the Erudus System take steps to ensure the information is regularly updated, they give no warranty and no guarantee that the information is accurate. Product information and ingredients may change, please always read product labels carefully in addition to using the information provided by Erudus One.

We do not accept liability for any inaccuracies or incorrect information contained on this site. Please visit <http://www.erudus.com/terms-and-conditions> for full terms and conditions.

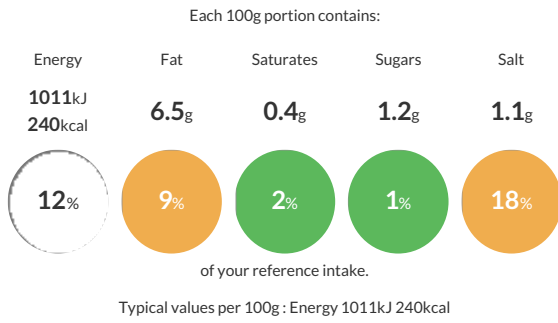
Fish-Stuffed Olives 6 x 1kg

Short Product Name:
 Fish-Stuffed Olives

Frozen gastronomic preparation made from green olives filled with fish, coated in breadcrumbs.

Traded Unit GTIN: **08020772002790** Internal GTIN: **8020772002790** Supplier : **Pacific West Foods** Suppliers Product Code : **SOF**

Reference Intake



Nutritional Information

Typical Values	Per 100g
Energy	1011kJ 240kCal
Carbohydrates	35.5g
of which sugars	1.2g
Fat	6.5g
of which saturates	0.4g
Fibre	2.5g
Protein	8.6g
Salt	1.1g

Allergy Information

Key: **Contains** **May Contain**



Dietary Information

Key: **Suitable for**



Ingredients

Pitted green olives 30% (antioxidants: citric acid, lactic acid); fish filling 30% (cooked Swordfish (Xiphias gladius)(FISH), *COD (Gadus morhua) (FISH), Jumbo Pacific Squid (Dosidicus Gigas) (MOLLUSC)), WHEAT flour (GLUTEN), water, sunflower oil, potato flakes, onion, parsley, salt, garlic, lemon pulp, FISH broth (salt, vegetable proteins from SOY and corn, potato, carrot, onion, garlic, CELERY, parsley, tomato, FISH, corn oil, CRUSTACEANS)), WHEAT flour (GLUTEN), lemon, salt, yeast, paprika, turmeric.

*Cod (Gadus morhua) may be replaced by Hake (Merluccius australis) depending on availability but will always be specified on the label.