

The information on the [Erudus System](#) has been supplied by the manufacturers of the products and, whilst the owners of the Erudus System take steps to ensure the information is regularly updated, they give no warranty and no guarantee that the information is accurate. Product information and ingredients may change, please always read product labels carefully in addition to using the information provided by Erudus One.

We do not accept liability for any inaccuracies or incorrect information contained on this site. Please visit <http://www.erudus.com/terms-and-conditions> for full terms and conditions.

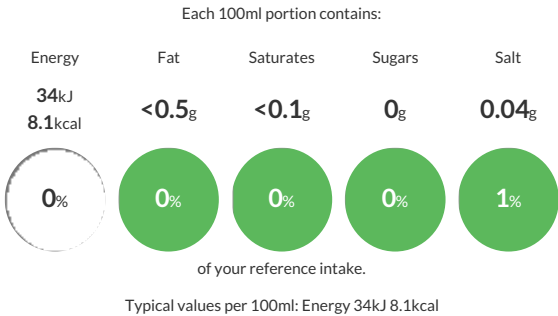
DVG SF CARAMEL SYRUP 6x1L

Short Product Name:  
Caramel flavour syrup with sweetener

Caramel Flavour syrup made with water, natural flavourings, sweeteners and preservative

Traded Unit GTIN: 05018010401507 Internal GTIN: 5018010001509 Supplier : Kerry Ingredients UK Limited Suppliers Product Code : 20561475

Reference Intake



Nutritional Information

Typical Values	Per 100ml
Energy	34kJ 8.1kCal
Carbohydrates	1.9g
of which sugars	0g
Fat	<0.5g
of which saturates	<0.1g
Fibre	-g
Protein	0g
Salt	0.04g

Allergy Information

Key: Contains May Contain

  
Does Not Contain Cereal/Gluten

  
Does Not Contain Milk

  
Does Not Contain Eggs

  
Does Not Contain Peanuts

  
Does Not Contain Nuts

  
Does Not Contain Crustaceans

  
Does Not Contain Mustard

  
Does Not Contain Fish

  
Does Not Contain Lupin

  
Does Not Contain Sesame

  
Does Not Contain Celery

  
Does Not Contain Soya

  
Does Not Contain Molluscs

  
Does Not Contain Sulphur Dioxide

Dietary Information

Key: Suitable for

  
Suitable for Vegetarian

  
Suitable for Vegan

  
Suitable for Kosher

  
Suitable for Halal

  
NO DATA for Coeliac

Ingredients

Water, Natural Flavourings\*, Stabiliser (Cellulose Gum), Sweeteners (Acesulfame K, Sucralose), Acidity Regulator (Citric Acid), Preservative (Potassium Sorbate), Colour (Plain Caramel).