

The information on the [Erudus System](#) has been supplied by the manufacturers of the products and, whilst the owners of the Erudus System take steps to ensure the information is regularly updated, they give no warranty and no guarantee that the information is accurate. Product information and ingredients may change, please always read product labels carefully in addition to using the information provided by Erudus One.

We do not accept liability for any inaccuracies or incorrect information contained on this site. Please visit <http://www.erudus.com/terms-and-conditions> for full terms and conditions.

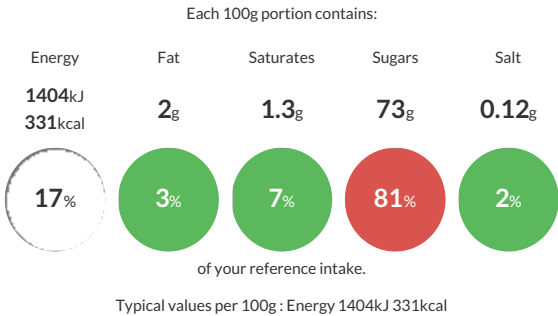
# Askeys Toffee Treat 12x600g

Short Product Name:  
Toffee Treat

A pourable dessert topping syrup with characteristic toffee flavour.

Traded Unit GTIN: 05010067343403 Internal GTIN: 5010067343397 Supplier : The Silver Spoon Company Suppliers Product Code: 34340

## Reference Intake



## Nutritional Information

Typical Values	Per 100g
Energy	1404kJ 331kCal
Carbohydrates	77g
of which sugars	73g
Fat	2g
of which saturates	1.3g
Fibre	0g
Protein	1.4g
Salt	0.12g

## Allergy Information

Key: Contains May Contain

  
Does Not Contain Cereal/Gluten

  
Contains Milk

  
Does Not Contain Eggs

  
Does Not Contain Peanuts

  
Does Not Contain Nuts

  
Does Not Contain Crustaceans

  
Does Not Contain Mustard

  
Does Not Contain Fish

  
Does Not Contain Lupin

  
Does Not Contain Sesame

  
Does Not Contain Celery

  
Does Not Contain Soya

  
Does Not Contain Molluscs

  
Does Not Contain Sulphur Dioxide

## Dietary Information

Key: Suitable for

  
Suitable for Vegetarian

  
May not be suitable for Vegan

  
May not be suitable for Kosher

  
May not be suitable for Halal

  
NO DATA for Coeliac

## Ingredients

Invert Sugar Syrup, Full Cream Sweetened Condensed MILK, Colour: Plain Caramel; Natural Flavouring.