

Supplier's Product Code :
Product Added :
Last Updated by Supplier :
erudus id :

885F
20 June 2023
21 June 2023
5d3c83e87dcb4784aa5f9591c34d2709



The information on the **Erudus System** has been supplied by the manufacturers of the products and, whilst the owners of the Erudus System take steps to ensure the information is regularly updated, they give no warranty and no guarantee that the information is accurate. Product information and ingredients may change, please always read product labels carefully in addition to using the information provided by Erudus One.

We do not accept liability for any inaccuracies or incorrect information contained on this site. Please visit <http://www.erudus.com/terms-and-conditions> for full terms and conditions.

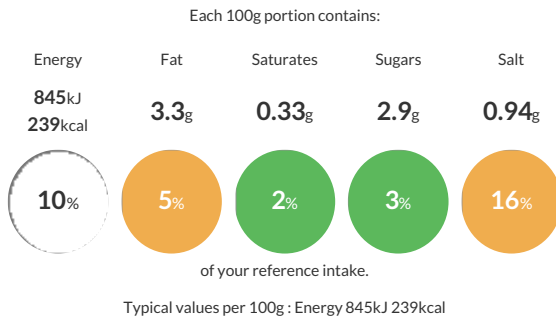
Poppy and Linseed Topped Sourdough Burger Buns 32x2

Short Product Name:
Burger bun

Seed topped Burger Bun.

Traded Unit GTIN: Internal GTIN: Supplier: **The Sourdough Company Ltd** Suppliers Product Code: **885F**

Reference Intake



Nutritional Information

Typical Values	Per 100g
Energy	845kJ 239kCal
Carbohydrates	42.7g
of which sugars	2.9g
Fat	3.3g
of which saturates	0.33g
Fibre	2.1g
Protein	7.4g
Salt	0.94g

Allergy Information

Key: **Contains** **May Contain**



Dietary Information

Key: **Suitable for**



Allergen Statement

This product contains **WHEAT FLOUR, WHEAT GLUTEN**. May contain **RYE** and **BARLEY**.

Ingredients

White **WHEAT** Flour, (**WHEAT** Flour, Calcium Carbonate, Iron, Niacin, Thiamin, **WHEAT GLUTEN**), Water, Linseeds, Poppy Seeds, Sugar, Rapeseed Oil, White Starter Mix (White **WHEAT** Flour, Water), Yeast, Salt, Crumb Softener (Enzymes, **WHEAT** Flour), Bread Improver (**WHEAT** Flour, Flour Treatment Agent, Ascorbic Acid), Glaze Mix (Water, Glaze (Pea Protein, Dextrose)).