

The information on the [Erudus System](#) has been supplied by the manufacturers of the products and, whilst the owners of the Erudus System take steps to ensure the information is regularly updated, they give no warranty and no guarantee that the information is accurate. Product information and ingredients may change, please always read product labels carefully in addition to using the information provided by Erudus One.

We do not accept liability for any inaccuracies or incorrect information contained on this site. Please visit <http://www.erudus.com/terms-and-conditions> for full terms and conditions.

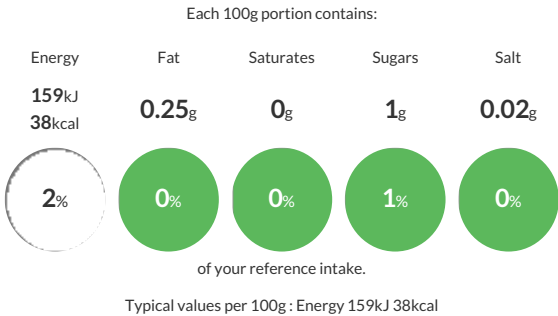
## Darta Woodland Mix 10 x 600 g

Short Product Name:  
Woodland Mix

Darta Woodland mix

Traded Unit GTIN: **5413408781368** Internal GTIN: **5413408119536** Supplier : **D'Arta S.A.** Suppliers Product Code: **13617899 - S13610780991**

### Reference Intake



### Nutritional Information

Typical Values	Per 100g
Energy	159kJ 38kCal
Carbohydrates	6g
of which sugars	1g
Fat	0.25g
of which saturates	0g
Fibre	1.9g
Protein	2g
Salt	0.02g

### Allergy Information

Key: **Contains** **May Contain**



Does Not Contain Cereal/Gluten



Does Not Contain Milk



Does Not Contain Eggs



Does Not Contain Peanuts



Does Not Contain Nuts



Does Not Contain Crustaceans



Does Not Contain Mustard



Does Not Contain Fish



Does Not Contain Lupin



Does Not Contain Sesame



Does Not Contain Celery



Does Not Contain Soya



Does Not Contain Molluscs



Does Not Contain Sulphur Dioxide

### Dietary Information

Key: **Suitable for**



Suitable for Vegetarian



Suitable for Vegan



May not be suitable for Kosher



May not be suitable for Halal



NO DATA for Coeliac

### Ingredients

Baby oyster mushrooms, mushrooms, Nameko mushrooms, Shiitake, boletus edulis in varying proportions.