

The information on the [Erudus System](#) has been supplied by the manufacturers of the products and, whilst the owners of the Erudus System take steps to ensure the information is regularly updated, they give no warranty and no guarantee that the information is accurate. Product information and ingredients may change, please always read product labels carefully in addition to using the information provided by Erudus One.

We do not accept liability for any inaccuracies or incorrect information contained on this site. Please visit <http://www.erudus.com/terms-and-conditions> for full terms and conditions.

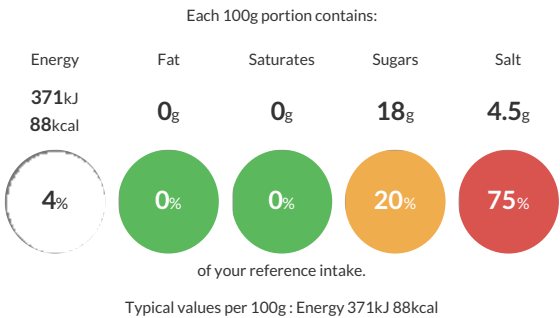
Sriracha Chilli Sauce 740ml

Short Product Name:
Sriracha Chilli Sauce

Thick red sauce, salty, sour and spicy taste, used as a dip.

Traded Unit GTIN: 5060103917082 Internal GTIN: 5060103917075 Supplier : Centaur Foods Ltd Suppliers Product Code : CHI002

Reference Intake



Nutritional Information

Typical Values	Per 100g
Energy	371kJ 88kCal
Carbohydrates	21g
of which sugars	18g
Fat	0g
of which saturates	0g
Fibre	1.8g
Protein	0g
Salt	4.5g

Allergy Information

Key: Contains May Contain

Does Not Contain Cereal/Gluten

Does Not Contain Milk

Does Not Contain Eggs

Does Not Contain Peanuts

Does Not Contain Nuts

Does Not Contain Crustaceans

Does Not Contain Mustard

Does Not Contain Fish

Does Not Contain Lupin

Does Not Contain Sesame

Does Not Contain Celery

Does Not Contain Soya

Does Not Contain Molluscs

Does Not Contain Sulphur Dioxide

Dietary Information

Key: Suitable for

Suitable for Vegetarian

Suitable for Vegan

May not be suitable for Kosher

May not be suitable for Halal

NO DATA for Coeliac

Ingredients

Water 29%, Red Chilli 28%, Sugar 25%, Garlic 7%, Salt 5%, Stabilizer (Xanthan gum E415) 4.4%, Thickener (Modified corn Starch E1422) 1%, Acidity regulator (Acetic Acid E260) 0.55%, Natural Colour (Paprika oleoresin E160c) 0.05% .