

The information on the [Erudus System](#) has been supplied by the manufacturers of the products and, whilst the owners of the Erudus System take steps to ensure the information is regularly updated, they give no warranty and no guarantee that the information is accurate. Product information and ingredients may change, please always read product labels carefully in addition to using the information provided by Erudus One.

We do not accept liability for any inaccuracies or incorrect information contained on this site. Please visit <http://www.erudus.com/terms-and-conditions> for full terms and conditions.

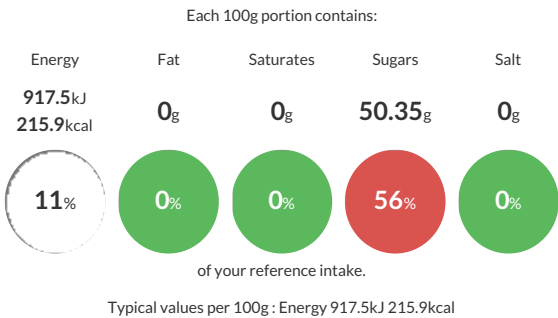
Wye Strawberry Extra Jam 1.2kg

Short Product Name:
Strawberry Extra Jam

Wye Strawberry Extra Jam in 1.2kg catering plastic tub

Traded Unit GTIN:  Internal GTIN:  Supplier:  The Wooden Spoon Preserving Company Suppliers Product Code:  KFC204

Reference Intake



Nutritional Information

Typical Values	Per 100g
Energy	917.5kJ 215.9kCal
Carbohydrates	53.6g
of which sugars	50.35g
Fat	0g
of which saturates	0g
Fibre	0.6g
Protein	0.03g
Salt	0g

Allergy Information

Key:  Contains  May Contain


Does Not Contain Cereal/Gluten


May Contain Milk


May Contain Eggs


May Contain Peanuts


May Contain Nuts


Does Not Contain Crustaceans


May Contain Mustard


Does Not Contain Fish


Does Not Contain Lupin


Does Not Contain Sesame


May Contain Celery


Does Not Contain Soya


Does Not Contain Molluscs


Does Not Contain Sulphur Dioxide

Dietary Information

Key:  Suitable for


Suitable for Vegetarian


Suitable for Vegan


May not be suitable for Kosher


May not be suitable for Halal


NO DATA for Coeliac

Ingredients

Sugar, Strawberries (45%), Gelling Agent: Pectin, Citric Acid.