

The information on the [Erudus System](#) has been supplied by the manufacturers of the products and, whilst the owners of the Erudus System take steps to ensure the information is regularly updated, they give no warranty and no guarantee that the information is accurate. Product information and ingredients may change, please always read product labels carefully in addition to using the information provided by Erudus One.

We do not accept liability for any inaccuracies or incorrect information contained on this site. Please visit <http://www.erudus.com/terms-and-conditions> for full terms and conditions.

Beetroot Cooked

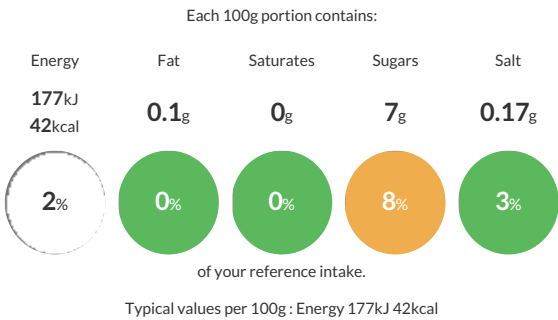
Warning! This Product Specification complies with EU Food Information Regulation No. 1169/2011 (FIR) however we are still awaiting further product attributes to complete the full Erudus specification.

Short Product Name:
Beetroot Cooked

Red Beetroot, peeled, vacuum packed, steam cooked and sterilised

Traded Unit GTIN: Internal GTIN: Supplier : Suppliers Product Code :

Reference Intake



Nutritional Information

Typical Values	Per 100g
Energy	177kJ 42kCal
Carbohydrates	7.6g
of which sugars	7g
Fat	0.1g
of which saturates	0g
Fibre	1.9g
Protein	1.7g
Salt	0.17g

Allergy Information

Key:

Does Not Contain Cereal/Gluten

Does Not Contain Milk

Does Not Contain Eggs

Does Not Contain Peanuts

Does Not Contain Nuts

Does Not Contain Crustaceans

Does Not Contain Mustard

Does Not Contain Fish

Does Not Contain Lupin

Does Not Contain Sesame

Does Not Contain Celery

Does Not Contain Soya

Does Not Contain Molluscs

Does Not Contain Sulphur Dioxide

Gluten Claim
Gluten content is less than 20ppm.

Ingredients

Beetroot

Dietary Information

Key:

Suitable for Vegetarian

Suitable for Vegan

May not be suitable for Kosher

May not be suitable for Halal

Suitable for Coeliac