

The information on the [Erudus System](#) has been supplied by the manufacturers of the products and, whilst the owners of the Erudus System take steps to ensure the information is regularly updated, they give no warranty and no guarantee that the information is accurate. Product information and ingredients may change, please always read product labels carefully in addition to using the information provided by Erudus One.

We do not accept liability for any inaccuracies or incorrect information contained on this site. Please visit <http://www.erudus.com/terms-and-conditions> for full terms and conditions.

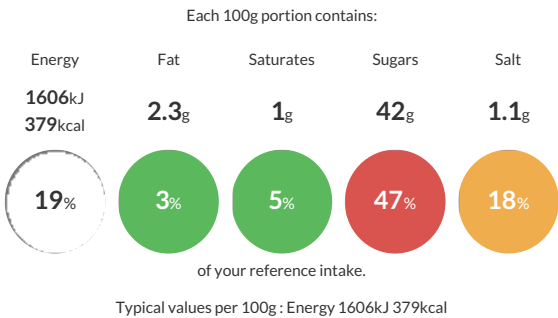
# Sysco Classic Chocolate Flavour Sponge Mix

Short Product Name:  
Chocolate Flavour Sponge Mix

Chocolate Flavour Sponge Mix

Traded Unit GTIN: 5063662000578 Internal GTIN: 5063662000585 Supplier : Sysco GB Limited Suppliers Product Code : 152987

## Reference Intake



## Nutritional Information

Typical Values	Per 100g
Energy	1606kJ 379kCal
Carbohydrates	80g
of which sugars	42g
Fat	2.3g
of which saturates	1g
Fibre	1.3g
Protein	9.3g
Salt	1.1g

## Allergy Information

Key: Contains May Contain

  
Contains  
Cereal/Gluten

  
Contains  
Milk

  
Contains  
Eggs

  
Does Not  
Contain  
Peanuts

  
Does Not  
Contain  
Nuts

  
Does Not  
Contain  
Crustaceans

  
Does Not  
Contain  
Mustard

  
Does Not  
Contain  
Fish


  
Does Not  
Contain  
Lupin

  
Does Not  
Contain  
Sesame

  
Does Not  
Contain  
Celery

  
Does Not  
Contain  
Soya

  
Does Not  
Contain  
Molluscs

  
Does Not  
Contain  
Sulphur  
Dioxide

## Dietary Information

Key: Suitable for

  
Suitable for  
Vegetarian

  
May not be  
suitable for  
Vegan

  
NO DATA for  
Kosher

  
NO DATA for  
Halal

  
NO DATA for  
Coeliac

## Ingredients

<b>Wheat</b> Flour (<b>Wheat</b> Flour, Calcium Carbonate, Niacin, Iron, Thiamin), Sugar, Fat-Reduced Cocoa Powder, Raising Agents (Potassium Hydrogen Carbonate, Disodium Diphosphate), <b>Egg</b> Powder, <b>Milk</b> Proteins, Dextrose, Rice Starch, <b>Egg</b> Albumen, Emulsifiers (Polyglycerol Esters of Fatty Acids, Mono- and Diglycerides of Fatty Acids, Polysorbate 80).