

The information on the [Erudus System](#) has been supplied by the manufacturers of the products and, whilst the owners of the Erudus System take steps to ensure the information is regularly updated, they give no warranty and no guarantee that the information is accurate. Product information and ingredients may change, please always read product labels carefully in addition to using the information provided by Erudus One.

We do not accept liability for any inaccuracies or incorrect information contained on this site. Please visit <http://www.erudus.com/terms-and-conditions> for full terms and conditions.

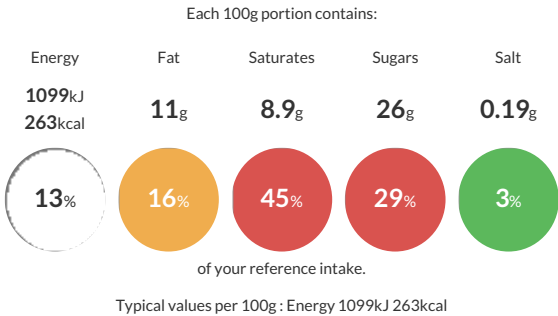
# Cornetto Ice Cream Cone Strawberry 120 ml

Short Product Name:  
Cornetto Ice Cream Cone Strawberry 120 ml

Strawberry fruit ice and vanilla flavour ice cream, with strawberry sauce (5%), wafer cone (13%), chocolate flavour coating (6.5%) and white chocolate pieces (1%)

Traded Unit GTIN: **8711327320154** Internal GTIN: **8711327320109** Supplier : **Unilever UK Limited** Suppliers Product Code : **68524510**

## Reference Intake



## Nutritional Information

Typical Values	Per 100g
Energy	1099kJ 263kCal
Carbohydrates	38g
of which sugars	26g
Fat	11g
of which saturates	8.9g
Fibre	-g
Protein	2.1g
Salt	0.19g

## Allergy Information

Key: **Contains** **May Contain**

  
Contains Cereal/Gluten

  
Contains Milk

  
Does Not Contain Eggs

  
May Contain Peanuts

  
May Contain Nuts

  
Does Not Contain Crustaceans

  
Does Not Contain Mustard

  
Does Not Contain Fish

  
Does Not Contain Lupin

  
Does Not Contain Sesame

  
Does Not Contain Celery

  
May Contain Soya

  
Does Not Contain Molluscs

  
Does Not Contain Sulphur Dioxide

## Dietary Information

Key: **Suitable for**

  
May not be suitable for Vegetarian

  
NO DATA for Vegan

  
May not be suitable for Kosher

  
May not be suitable for Halal

  
NO DATA for Coeliac

**Allergen Statement**  
May contain almond, hazelnut, peanut and soy.

## Ingredients

Reconstituted skimmed **MILK**, sugar, water, **WHEAT** flour, strawberry puree (9%), coconut fat, glucose syrup, strawberry juice from concentrate (4%), fructose, sunflower oil, fat-reduced cocoa powder, cocoa butter, emulsifiers (lecithins, mono- and diglycerides of fatty acids, ammonium phosphatides), whole **MILK** powder, potato starch, stabilisers (guar gum, locust bean gum, tara gum, carrageenan), salt, acidity regulator (citric acid), caramelised sugar syrup, beetroot juice concentrate, whey solids ( **MILK**), flavourings (contains **MILK**).