

The information on the [Erudus System](#) has been supplied by the manufacturers of the products and, whilst the owners of the Erudus System take steps to ensure the information is regularly updated, they give no warranty and no guarantee that the information is accurate. Product information and ingredients may change, please always read product labels carefully in addition to using the information provided by Erudus One.

We do not accept liability for any inaccuracies or incorrect information contained on this site. Please visit <http://www.erudus.com/terms-and-conditions> for full terms and conditions.

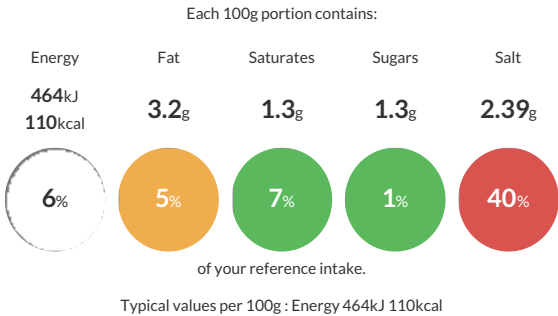
Sliced Salt Beef

Short Product Name:
Sliced Salt Beef

Sliced cooked Salt Beef, with added water (beef 90%) MAP x 500g

Traded Unit GTIN:  Internal GTIN: Supplier :  Suppliers Product Code :  SBS12

Reference Intake



Nutritional Information

Typical Values	Per 100g
Energy	464kJ 110kCal
Carbohydrates	1.3g
of which sugars	1.3g
Fat	3.2g
of which saturates	1.3g
Fibre	0.5g
Protein	19g
Salt	2.39g

Allergy Information

Key:  Contains  May Contain



Does Not Contain Cereal/Gluten



Does Not Contain Milk



Does Not Contain Eggs



Does Not Contain Peanuts



Does Not Contain Nuts



Does Not Contain Crustaceans



Does Not Contain Mustard



Does Not Contain Fish



Does Not Contain Lupin



Does Not Contain Sesame



Does Not Contain Celery



Does Not Contain Soya



Does Not Contain Molluscs



Does Not Contain Sulphur Dioxide

Dietary Information

Key:  Suitable for



May not be suitable for Vegetarian



May not be suitable for Vegan



May not be suitable for Kosher



May not be suitable for Halal



Suitable for Coeliac

Ingredients

Beef (beef 90%), water, salt, glucose syrup, dextrose, stabilisers (E451, E 450, E452), antioxidant (E301), preservative (E250). Gas, 30% CO2 (E290) in N2 (941)