

The information on the [Erudus System](#) has been supplied by the manufacturers of the products and, whilst the owners of the Erudus System take steps to ensure the information is regularly updated, they give no warranty and no guarantee that the information is accurate. Product information and ingredients may change, please always read product labels carefully in addition to using the information provided by Erudus One.

We do not accept liability for any inaccuracies or incorrect information contained on this site. Please visit <http://www.erudus.com/terms-and-conditions> for full terms and conditions.

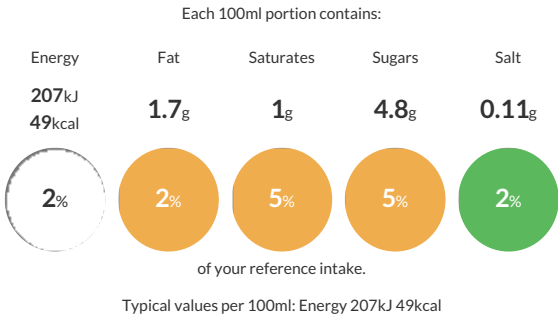
Cravendale Semi Skimmed Milk 10x250ml

Short Product Name:
Filtered Milk 1.5% Semi Skimmed

Pasteurised, homogenised, semi-skimmed, fresh filtered milk.

Traded Unit GTIN: 05000181041361 Internal GTIN: 5000181036886 Supplier : Arla Foods UK PLC Suppliers Product Code : 88057

Reference Intake



Nutritional Information

Typical Values	Per 100ml
Energy	207kJ 49kCal
Carbohydrates	4.8g
of which sugars	4.8g
Fat	1.7g
of which saturates	1g
Fibre	-g
Protein	3.6g
Salt	0.11g

Allergy Information

Key: Contains May Contain


Does Not Contain Cereal/Gluten


Contains Milk


Does Not Contain Eggs


Does Not Contain Peanuts


Does Not Contain Nuts


Does Not Contain Crustaceans


Does Not Contain Mustard


Does Not Contain Fish


Does Not Contain Lupin


Does Not Contain Sesame


Does Not Contain Celery


Does Not Contain Soya


Does Not Contain Molluscs


Does Not Contain Sulphur Dioxide

Allergen Statement
Contains MILK.

Ingredients

Semi-skimmed milk (MILK).

Dietary Information

Key: Suitable for


Suitable for Vegetarian


NO DATA for Vegan


May not be suitable for Kosher


May not be suitable for Halal


NO DATA for Coeliac