

The information on the [Erudus System](#) has been supplied by the manufacturers of the products and, whilst the owners of the Erudus System take steps to ensure the information is regularly updated, they give no warranty and no guarantee that the information is accurate. Product information and ingredients may change, please always read product labels carefully in addition to using the information provided by Erudus One.

We do not accept liability for any inaccuracies or incorrect information contained on this site. Please visit <http://www.erudus.com/terms-and-conditions> for full terms and conditions.

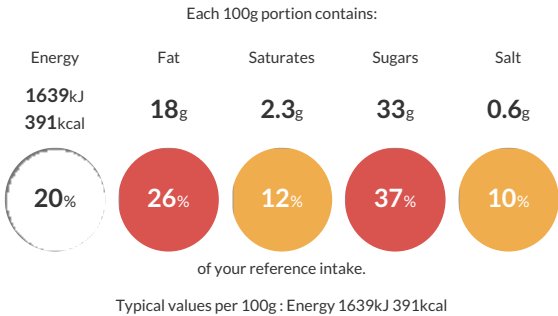
STICKY GINGER LOAF CAKE (1x19 Pre-portioned)

Short Product Name:
STICKY GINGER LOAF CAKE

A moist ginger flavoured sponge loaf cake, topped with a ginger syrup sauce and chewy stem ginger pieces. This cake is pre-portioned into 19 portions and packed 1 per outer.

Traded Unit GTIN: 5015091360778 Internal GTIN: Supplier: C D T Sidoli (Welshpool) Limited Suppliers Product Code: 36077

Reference Intake



Nutritional Information

Typical Values	Per 100g
Energy	1639kJ 391kCal
Carbohydrates	52g
of which sugars	33g
Fat	18g
of which saturates	2.3g
Fibre	1.1g
Protein	4.7g
Salt	0.6g

Allergy Information

Key: Contains May Contain


Contains Cereal/Gluten


Contains Milk


Contains Eggs


Does Not Contain Peanuts


May Contain Nuts


Does Not Contain Crustaceans


Does Not Contain Mustard


Does Not Contain Fish


Does Not Contain Lupin


Does Not Contain Sesame


Does Not Contain Celery


Does Not Contain Soya


Does Not Contain Molluscs


Does Not Contain Sulphur Dioxide

Dietary Information

Key: Suitable for


Suitable for Vegetarian


May not be suitable for Vegan


May not be suitable for Kosher


May not be suitable for Halal


NO DATA for Coeliac

Allergen Statement
MADE IN A FACTORY THAT ALSO HANDLES THE FOLOWING ALLERGEN: NUTS.

Ingredients

Sugar, **WHEAT** flour (with added calcium carbonate, niacin, iron, folic acid, thiamine), **EGG**, rapeseed oil, crushed stem ginger (7%) (ginger, sugar, water), water, black treacle, golden syrup, modified maize starch, **MILK** protein, raising agents (diphosphates, potassium carbonates), ginger (1%), humectant (glycerine), emulsifiers (mono- and diglycerides of fatty acids, sodium stearyl-2-lactylate), **WHEAT** protein, natural flavouring, colour blend (**BARLEY** malt extract, curcumin), **WHEAT** starch.