

The information on the [Erudus System](#) has been supplied by the manufacturers of the products and, whilst the owners of the Erudus System take steps to ensure the information is regularly updated, they give no warranty and no guarantee that the information is accurate. Product information and ingredients may change, please always read product labels carefully in addition to using the information provided by Erudus One.

We do not accept liability for any inaccuracies or incorrect information contained on this site. Please visit <http://www.erudus.com/terms-and-conditions> for full terms and conditions.

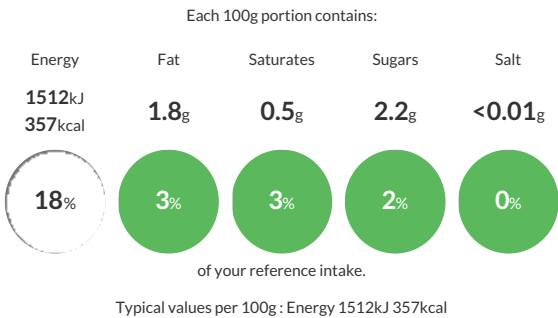
Reggia Cannelloni 12x250g

Short Product Name:
Durum Wheat Semolina pasta

Durum Wheat Semolina Cannelloni pasta.

Traded Unit GTIN: 08008857608099 Internal GTIN: 8008857601090 Supplier : Bonta Italia Ltd Suppliers Product Code : RR100620

Reference Intake



Nutritional Information

Typical Values	Per 100g
Energy	1512kJ 357kCal
Carbohydrates	71.2g
of which sugars	2.2g
Fat	1.8g
of which saturates	0.5g
Fibre	3.3g
Protein	12.4g
Salt	<0.01g


Allergy Information

Key: Contains May Contain



Contains Cereal/Gluten


Does Not Contain Milk



May Contain Eggs


Does Not Contain Peanuts


Does Not Contain Nuts


Does Not Contain Crustaceans


May Contain Mustard



Does Not Contain Fish


Does Not Contain Lupin


Does Not Contain Sesame


Does Not Contain Celery


May Contain Soya


Does Not Contain Molluscs


Does Not Contain Sulphur Dioxide

Allergen Statement
May also contain EGG, SOYA and MUSTARD.

Ingredients

Durum **WHEAT** semolina,

Dietary Information

Key: Suitable for


Suitable for Vegetarian


Suitable for Vegan


Suitable for Kosher


Suitable for Halal


NO DATA for Coeliac