

The information on the [Erudus System](#) has been supplied by the manufacturers of the products and, whilst the owners of the Erudus System take steps to ensure the information is regularly updated, they give no warranty and no guarantee that the information is accurate. Product information and ingredients may change, please always read product labels carefully in addition to using the information provided by Erudus One.

We do not accept liability for any inaccuracies or incorrect information contained on this site. Please visit <http://www.erudus.com/terms-and-conditions> for full terms and conditions.

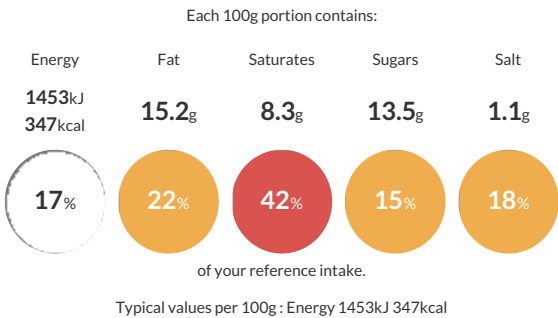
Schar Gluten Free Pain Au Chocolat

Short Product Name:
Schar Gluten Free Pain Au Chocolat

Schar Gluten Free Pain Au Chocolat

Traded Unit GTIN: **8008698019917** Internal GTIN: Supplier : **Dr Schar UK Limited** Suppliers Product Code : **1011090601**

Reference Intake



Nutritional Information

Typical Values	Per 100g
Energy	1453kJ 347kCal
Carbohydrates	45.6g
of which sugars	13.5g
Fat	15.2g
of which saturates	8.3g
Fibre	6.5g
Protein	3.7g
Salt	1.1g

Allergy Information

Key: **Contains** **May Contain**

Contains Cereal/Gluten

Contains Milk

Contains Eggs

May Contain Peanuts

May Contain Nuts

Does Not Contain Crustaceans

May Contain Mustard

Does Not Contain Fish

Does Not Contain Lupin

Does Not Contain Sesame

Does Not Contain Celery

Contains Soya

Does Not Contain Molluscs

Does Not Contain Sulphur Dioxide

Dietary Information

Key: **Suitable for**

Suitable for Vegetarian

May not be suitable for Vegan

May not be suitable for Kosher

May not be suitable for Halal

Suitable for Coeliac

Gluten Claim
Gluten content is less than 20ppm.

Ingredients

gluten free wheat starch, vegetable margarine (palm oil, rapeseed oil, water, sunflower oil, emulsifier: mono- and diglycerides of fatty acids; salt, natural flavouring), dark chocolate 15% (sugar, cocoa mass** 44.5%, cocoa butter**, emulsifier: soya lecithin; natural vanilla flavouring), water, Barn egg*, dextrose, rice flour, chicory fibre, raising agents: glucono delta-lactone, sodium hydrogen carbonate; vegetable fibre (psyllium), Barn egg white powder*, skimmed milk powder, yeast, thickener: xanthan gum; sugar, salt, natural flavouring, emulsifier: mono- and diglycerides of fatty acids.