

The information on the [Erudus System](#) has been supplied by the manufacturers of the products and, whilst the owners of the Erudus System take steps to ensure the information is regularly updated, they give no warranty and no guarantee that the information is accurate. Product information and ingredients may change, please always read product labels carefully in addition to using the information provided by Erudus One.

We do not accept liability for any inaccuracies or incorrect information contained on this site. Please visit <http://www.erudus.com/terms-and-conditions> for full terms and conditions.

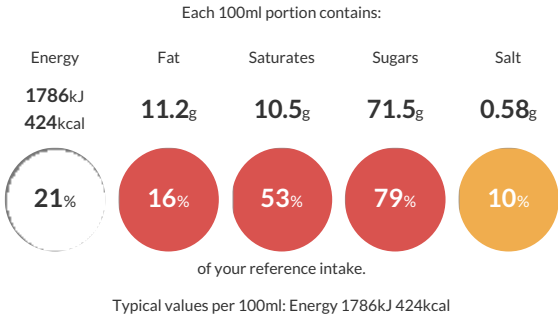
LOF011 - Chai Latte 4 x 1kg

Short Product Name:

Chai Latte Powder 4 x 1kg

Traded Unit GTIN: 5060134525614 Internal GTIN: 5060134525607 Supplier : Lofbergs Suppliers Product Code : LOF011

Reference Intake



Nutritional Information

Typical Values	Per 100ml
Energy	1786kJ 424kCal
Carbohydrates	73.9g
of which sugars	71.5g
Fat	11.2g
of which saturates	10.5g
Fibre	5.6g
Protein	4.2g
Salt	0.58g

Allergy Information

Key: Contains May Contain

Gluten < 20ppm
Does Not Contain Cereal/Gluten

Contains Milk

Does Not Contain Eggs

Does Not Contain Peanuts

Does Not Contain Nuts

Does Not Contain Crustaceans

Does Not Contain Mustard

Does Not Contain Fish

Does Not Contain Lupin

Does Not Contain Sesame

Does Not Contain Celery

Does Not Contain Soya

Does Not Contain Molluscs

Contains Sulphur Dioxide

Gluten Claim
Gluten content is less than 20ppm.

Allergen Statement
NOT SUITABLE FOR PEOPLE WITH LACTOSE INTOLERANCE, NOT SUITABLE FOR VEGANS.

Ingredients

Sugar, coconut oil, skimmed MILK powder, ground cinnamon (4%), whey powder (MILK), black tea extract (3%), ground ginger (2%), colour: plain caramel. thickener: e466. MILK proteins, natural flavorings, stabiliser: E451.

Dietary Information

Key: Suitable for

Suitable for Vegetarian

May not be suitable for Vegan

May not be suitable for Kosher

May not be suitable for Halal

Suitable for Coeliac