

The information on the [Erudus System](#) has been supplied by the manufacturers of the products and, whilst the owners of the Erudus System take steps to ensure the information is regularly updated, they give no warranty and no guarantee that the information is accurate. Product information and ingredients may change, please always read product labels carefully in addition to using the information provided by Erudus One.

We do not accept liability for any inaccuracies or incorrect information contained on this site. Please visit <http://www.erudus.com/terms-and-conditions> for full terms and conditions.

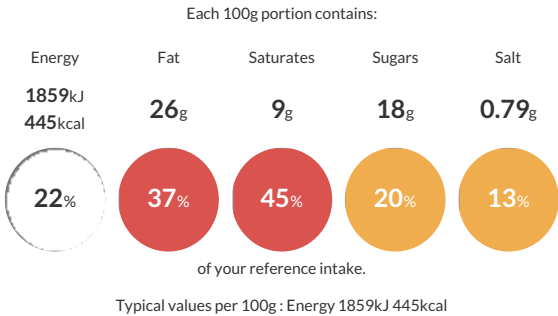
LOTUS BISCOFF® Mini Donuts

Short Product Name:
Mini doughnuts with Speculoos filling

Mini Beignets filled with a speculoos filling.

Traded Unit GTIN: 03760008853899 Internal GTIN: 3760008853899 Supplier : Mademoiselle Desserts (Taunton) Suppliers Product Code : A2F0702

Reference Intake



Nutritional Information

Typical Values	Per 100g
Energy	1859kJ 445kCal
Carbohydrates	45g
of which sugars	18g
Fat	26g
of which saturates	9g
Fibre	1.6g
Protein	7g
Salt	0.79g

Allergy Information

Key: Contains May Contain

Contains
Cereal/Gluten

Contains
Milk

Contains
Eggs

Does Not
Contain
Peanuts

May Contain
Nuts

Does Not
Contain
Crustaceans

Does Not
Contain
Mustard

Does Not
Contain
Fish

Does Not
Contain
Lupin

Does Not
Contain
Sesame

Does Not
Contain
Celery

Contains
Soya

Does Not
Contain
Molluscs

Does Not
Contain
Sulphur
Dioxide

Dietary Information

Key: Suitable for

Suitable for
Vegetarian

May not be
suitable for
Vegan

May not be
suitable for
Kosher

May not be
suitable for
Halal

NO DATA for
Coeliac

Allergen Statement
Allergens in the ingredients list (including cereals containing gluten) are shown in CAPITALS.

Ingredients

WHEAT flour, speculoos filling 24% (original speculoos 13,9% (WHEAT flour, sugar, vegetable oils (palm, rapeseed), candy sugar syrup, raising agent: sodium bicarbonate, SOYA flour, salt, cinnamon), rapeseed oil, sugar, emulsifier: SOYA lecithin, acidifying agent: citric acid), vegetable fats (certified palm, rapeseed), water, sugar, BUTTER, EGG, EGG white, dextrose, WHEAT gluten, yeast, salt, emulsifier: E471, WHEAT starch, malted WHEAT flour, color: E160a(iv), antioxidant: E300.