

Supplier's Product Code :  
 Product Added :  
 Last Updated by Supplier :  
 erudus id :

07267  
 09 April 2026  
 09 April 2026  
 68781e2affe04088a45acd81f4f1d40c



The information on the **Erudus System** has been supplied by the manufacturers of the products and, whilst the owners of the Erudus System take steps to ensure the information is regularly updated, they give no warranty and no guarantee that the information is accurate. Product information and ingredients may change, please always read product labels carefully in addition to using the information provided by Erudus One.

We do not accept liability for any inaccuracies or incorrect information contained on this site. Please visit <http://www.erudus.com/terms-and-conditions> for full terms and conditions.

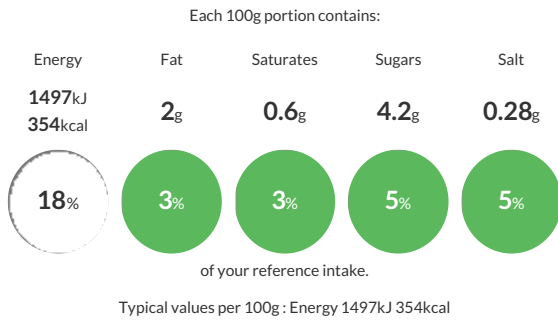
## Weetabix Cereal 10x24 Pack

Short Product Name:  
 Weetabix Cereal

Whole wheat cereal with added vitamins and iron.

Traded Unit GTIN: **05010029210699** Internal GTIN: **5010029000016** Supplier: **Weetabix Ltd** Suppliers Product Code: **07267**

### Reference Intake



### Nutritional Information

Typical Values	Per 100g
Energy	1497kJ 354kCal
Carbohydrates	68g
of which sugars	4.2g
Fat	2g
of which saturates	0.6g
Fibre	10g
Protein	11g
Salt	0.28g

### Allergy Information

Key: **Contains** **May Contain**

Contains Cereal/Gluten	Does Not Contain Milk	Does Not Contain Eggs	Does Not Contain Peanuts	Does Not Contain Nuts	Does Not Contain Crustaceans	Does Not Contain Mustard
Does Not Contain Fish	Does Not Contain Lupin	Does Not Contain Sesame	Does Not Contain Celery	Does Not Contain Soya	Does Not Contain Molluscs	Does Not Contain Sulphur Dioxide

### Dietary Information

Key: **Suitable for**

Suitable for Vegetarian	Suitable for Vegan	Suitable for Kosher	May not be suitable for Halal	NO DATA for Coeliac

### Allergen Statement

Allergy Advice. For allergens see ingredients in bold.

### Ingredients

WHEAT (95%), Malted **BARLEY** Extract, Sugar, Salt, Niacin, Iron, Riboflavin (B2), Thiamin (B1), Folic Acid.