

Supplier's Product Code :  
Product Added :  
Last Updated by Supplier :  
erudus id :

012192P  
28 May 2026  
29 May 2026  
68851dae1f114313b41fbc9c7cdb8624



The information on the **Erudus System** has been supplied by the manufacturers of the products and, whilst the owners of the Erudus System take steps to ensure the information is regularly updated, they give no warranty and no guarantee that the information is accurate. Product information and ingredients may change, please always read product labels carefully in addition to using the information provided by Erudus One.

We do not accept liability for any inaccuracies or incorrect information contained on this site. Please visit <http://www.erudus.com/terms-and-conditions> for full terms and conditions.

## Purple Pineapple Sliced Piri Piri Chicken 1kg

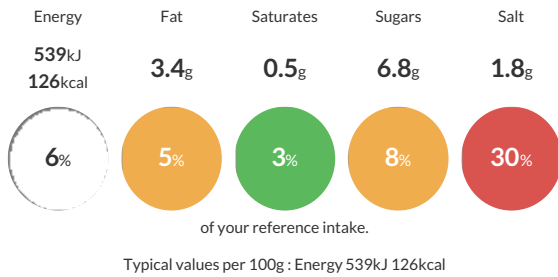
Short Product Name:  
Sliced Piri-Piri Chicken

Sliced chicken breast and diced peppers coated in a hot and spicy sauce

Traded Unit GTIN:  Internal GTIN:  Supplier: **Kff Ltd** Suppliers Product Code: **012192P**

### Reference Intake

Each 100g portion contains:

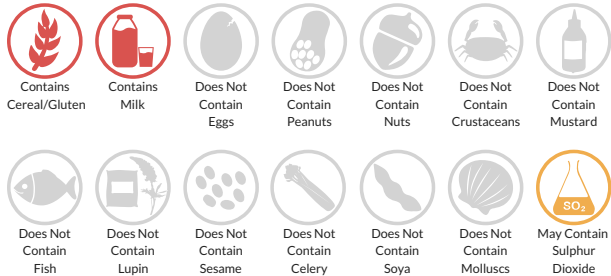


### Nutritional Information

Typical Values	Per 100g
Energy	539kJ 126kCal
Carbohydrates	9.8g
of which sugars	6.8g
Fat	3.4g
of which saturates	0.5g
Fibre	0.8g
Protein	13g
Salt	1.8g

### Allergy Information

Key: **Contains** **May Contain**



Allergen Statement  
May contain **SULPHITES**

### Ingredients

Chicken (50%) [Chicken Breast, Rice Starch, Salt, Dextrose, D Xylose, Maltodextrin, Stabilisers (Sodium Bicarbonate, Sodium Citrates)], Sauce (35%) [Water, Sugar, Spirit Vinegar, Tomato Paste, Vegetable Oil Rapeseed, Vegetables Red Chilli, Onion, Thickener Modified Starch (E1422), Dehydrated Vegetables Red Bell Pepper, Onion, Garlic, Salt, Whole **Milk** Powder, Paprika Extract, Cayenne, Malt (<b>Barley</b>) Extract (<b>Barley</b>), Basil, Nat Colour Curcumin E100, Preservative (E202 Potassium Sorbate)], Diced Red Peppers (15%)

<b>ALLERGY ADVICE:</b> For allergens, see ingredients in <b>Bold</b>

### Dietary Information

Key: **Suitable for**

