

The information on the [Erudus System](#) has been supplied by the manufacturers of the products and, whilst the owners of the Erudus System take steps to ensure the information is regularly updated, they give no warranty and no guarantee that the information is accurate. Product information and ingredients may change, please always read product labels carefully in addition to using the information provided by Erudus One.

We do not accept liability for any inaccuracies or incorrect information contained on this site. Please visit <http://www.erudus.com/terms-and-conditions> for full terms and conditions.

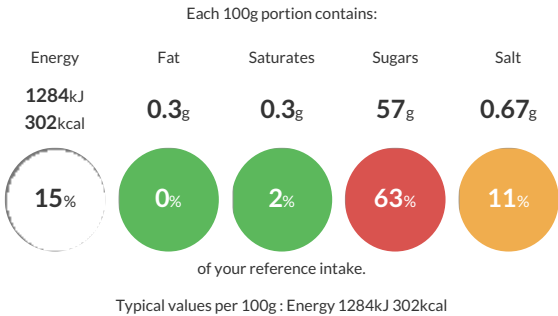
Simply Toffee Flavour Sauce 1.2kg

Short Product Name:
Simply Toffee Flavour Sauce 1.2kg

Toffee Flavour Sauce – a thick, caramel/mid brown colour sauce with flavour and aroma typical of toffee.

Traded Unit GTIN: **15060877202237** Internal GTIN: **5060877202230** Supplier : **IBC Simply** Suppliers Product Code : **SAUCETOFF1.2KGNEW**

Reference Intake



Nutritional Information

Typical Values	Per 100g
Energy	1284kJ 302kCal
Carbohydrates	69g
of which sugars	57g
Fat	0.3g
of which saturates	0.3g
Fibre	-g
Protein	2.5g
Salt	0.67g

Allergy Information

Key: **Contains** **May Contain**


Does Not Contain Cereal/Gluten


Contains Milk


Does Not Contain Eggs


Does Not Contain Peanuts


Does Not Contain Nuts


Does Not Contain Crustaceans


Does Not Contain Mustard


Does Not Contain Fish


Does Not Contain Lupin


Does Not Contain Sesame


Does Not Contain Celery



Does Not Contain Soya



Does Not Contain Molluscs



Does Not Contain Sulphur Dioxide


Dietary Information


Key: **Suitable for**


Suitable for Vegetarian


May not be suitable for Vegan


Suitable for Kosher


Suitable for Halal


NO DATA for Coeliac

Ingredients

Sugar, Sweetened condensed skimmed **milk** (Skimmed **milk**, Sugar, Lactose (**Milk**)), Water, Glucose syrup, Glycerine, Thickener: Modified maize starch, Natural flavouring, Salt, Caramelised sugar syrup, Emulsifier: Mono- and diglycerides of fatty acids, Preservative: E202, Acid: Citric acid.