

Supplier's Product Code :  
 Product Added :  
 Last Updated by Supplier :  
 erudus id :

CM0009TW  
 14 April 2026  
 14 April 2026  
 6a95d58c18a645eeb5bb23bfa52eb569



The information on the Erudus System has been supplied by the manufacturers of the products and, whilst the owners of the Erudus System take steps to ensure the information is regularly updated, they give no warranty and no guarantee that the information is accurate. Product information and ingredients may change, please always read product labels carefully in addition to using the information provided by Erudus One.

We do not accept liability for any inaccuracies or incorrect information contained on this site. Please visit <http://www.erudus.com/terms-and-conditions> for full terms and conditions.

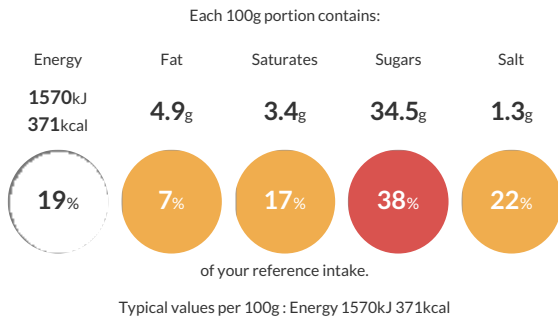
## Chocolate Muffin Mix (2020 Sugar Compliant) 4 x 3.5kg

Short Product Name:  
 Chocolate Muffin Mix

Rich Chocolate Muffin Mix, just add oil and water

Traded Unit GTIN: 5028081010737 Internal GTIN: 5028081010720 Supplier: Middleton Foods Ltd Suppliers Product Code: CM0009TW

### Reference Intake



### Nutritional Information

Typical Values	Per 100g
Energy	1570kJ 371kCal
Carbohydrates	73g
of which sugars	34.5g
Fat	4.9g
of which saturates	3.4g
Fibre	4g
Protein	9.2g
Salt	1.3g

### Allergy Information

Key: Contains May Contain

Contains Cereal/Gluten	Contains Milk	Contains Eggs	Does Not Contain Peanuts	Does Not Contain Nuts	Does Not Contain Crustaceans	Does Not Contain Mustard
Does Not Contain Fish	Does Not Contain Lupin	Does Not Contain Sesame	Does Not Contain Celery	May Contain Soya	Does Not Contain Molluscs	Does Not Contain Sulphur Dioxide

### Dietary Information

Key: Suitable for

Suitable for Vegetarian	May not be suitable for Vegan	May not be suitable for Kosher	May not be suitable for Halal	NO DATA for Coeliac
-------------------------	-------------------------------	--------------------------------	-------------------------------	---------------------

### Ingredients

<b>WHEAT </b>Flour (<b>WHEAT</b>, Calcium, Iron, Niacin, Thiamin), Sugar, Reduced Fat Cocoa Powder (7.6%), Dried Whole <b>EGG </b>Powder, Raising Agents (E450(i), E500(ii)), Palm Oil, Butter <b>MILK </b>Powder, Chocolate Flavour (0.35%), Thickener (Xanthan Gum).