

The information on the [Erudus System](#) has been supplied by the manufacturers of the products and, whilst the owners of the Erudus System take steps to ensure the information is regularly updated, they give no warranty and no guarantee that the information is accurate. Product information and ingredients may change, please always read product labels carefully in addition to using the information provided by Erudus One.

We do not accept liability for any inaccuracies or incorrect information contained on this site. Please visit <http://www.erudus.com/terms-and-conditions> for full terms and conditions.

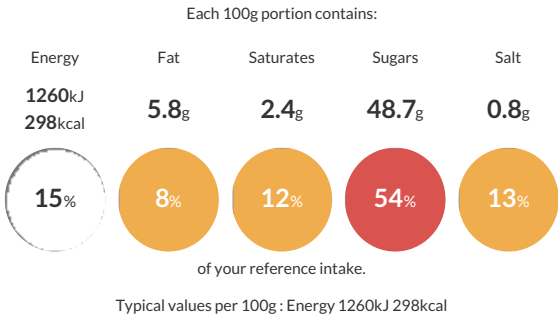
25cm Tomato Wheat Flour Tortilla 4 x 18ct Frozen

Short Product Name:
Tomato Wheat Flour Tortilla

A round flat bread can be used to wrap up and kind of food according to choice. The wraps can be served cold, warm, oven baked, microwave heated and even deep fried.

Traded Unit GTIN: 05036344006366 Internal GTIN: Supplier : Mission Foods (Coventry) Suppliers Product Code : 37266

Reference Intake



Nutritional Information

Typical Values	Per 100g
Energy	1260kJ 298kCal
Carbohydrates	52.1g
of which sugars	48.7g
Fat	5.8g
of which saturates	2.4g
Fibre	-g
Protein	8.1g
Salt	0.8g

Allergy Information

Key: Contains May Contain



Contains Cereal/Gluten



Does Not Contain Milk



Does Not Contain Eggs



Does Not Contain Peanuts



Does Not Contain Nuts



Does Not Contain Crustaceans



Does Not Contain Mustard



Does Not Contain Fish



Does Not Contain Lupin



Does Not Contain Sesame



Does Not Contain Celery



Does Not Contain Soya



Does Not Contain Molluscs



Does Not Contain Sulphur Dioxide

Dietary Information

Key: Suitable for



Suitable for Vegetarian



Suitable for Vegan



May not be suitable for Kosher



May not be suitable for Halal



May not be suitable for Coeliac

Ingredients

Fortified **WHEAT** Flour (**WHEAT** Flour, Calcium Carbonate, Iron, Niacin (B3), Thiamin (B1)), Water, Vegetable Oils (Palm Oil, Rapeseed Oil), Tomato Seasoning (Tomato Powder, Red Pepper, Paprika, Basil), Raising Agents (E500, E296, E450i), Sugar, Stabiliser (Sodium Carboxymethyl Cellulose), Salt.