

The information on the [Erudus System](#) has been supplied by the manufacturers of the products and, whilst the owners of the Erudus System take steps to ensure the information is regularly updated, they give no warranty and no guarantee that the information is accurate. Product information and ingredients may change, please always read product labels carefully in addition to using the information provided by Erudus One.

We do not accept liability for any inaccuracies or incorrect information contained on this site. Please visit <http://www.erudus.com/terms-and-conditions> for full terms and conditions.

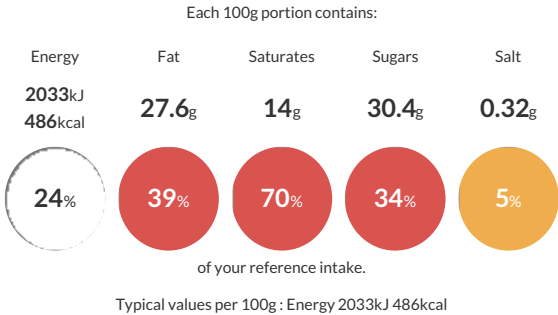
## GF Choc & Salted Caramel Tart (1 x 12)

Short Product Name:  
GF Choc & Salted Caramel Tart (1 x 12)

Gluten, wheat and milk free chocolate pastry case filled with a layer of salted caramel and chocolate ganache and finished with hazelnuts. Palm from a sustainable source, RSPO certificate number BMT-RSPO-000226 (1 x 12)

Traded Unit GTIN: 05028931176569 Internal GTIN: Supplier : Central Foods Group Limited Suppliers Product Code : WLC7656

### Reference Intake



### Nutritional Information

Typical Values	Per 100g
Energy	2033kJ 486kCal
Carbohydrates	54.7g
of which sugars	30.4g
Fat	27.6g
of which saturates	14g
Fibre	3.1g
Protein	3.2g
Salt	0.32g

### Allergy Information

Key: Contains May Contain

  
Does Not Contain Cereal/Gluten

  
Does Not Contain Milk

  
May Contain Eggs

  
May Contain Peanuts

  
Contains Nuts

  
Does Not Contain Crustaceans

  
Does Not Contain Mustard

  
Does Not Contain Fish

  
Does Not Contain Lupin

  
Does Not Contain Sesame

  
Does Not Contain Celery

  
Does Not Contain Soya

  
Does Not Contain Molluscs

  
Does Not Contain Sulphur Dioxide

### Dietary Information

Key: Suitable for

  
Suitable for Vegetarian

  
Suitable for Vegan

  
May not be suitable for Kosher

  
May not be suitable for Halal

  
NO DATA for Coeliac

**Allergen Statement**  
Made in an environment that handles other nuts and egg. May contain traces of peanut. Nuts handled: Pecans, walnuts, cashews, pistachios, brazil nuts.

### Ingredients

Chocolate Ganache (30%) (Sugar, Cocoa Mass, Coconut Milk, Glucose Syrup, Cocoa Butter, Water, Dextrose, Fructose, Rice Syrup, Palm Oil, Rapeseed Oil, Emulsifiers (E322, E473, E471), Cornflour, Humectant (Glycerine), Rice Starch, Acidity Regulator (E330), Flavouring), Caramel (25%) (Golden Syrup, Cocoa Butter, Sugar, Rice Flour, Flavouring, Salt, Colour (E150a), Emulsifier (E322)), Rice Flour, Tapioca Starch, Palm Oil, Oligofructose, Water, Rapeseed Oil, Sugar, Fat Reduced Cocoa Powder, Ground **ALMONDS, HAZELNUTS** (1%), Salt, Thickener (E415), Emulsifier (E471).