

Supplier's Product Code :
Product Added :
Last Updated by Supplier :
erudus id :

611460
19 August 2025
19 August 2025
6e55467899c64b3fa1802675ac8a4e21



The information on the Erudus System has been supplied by the manufacturers of the products and, whilst the owners of the Erudus System take steps to ensure the information is regularly updated, they give no warranty and no guarantee that the information is accurate. Product information and ingredients may change, please always read product labels carefully in addition to using the information provided by Erudus One.

We do not accept liability for any inaccuracies or incorrect information contained on this site. Please visit <http://www.erudus.com/terms-and-conditions> for full terms and conditions.

TREBOR EXTRA STRONG 41.3G PEPPERMINT 40CA

Warning! This Product Specification complies with EU Food Information Regulation No. 1169/2011 (FIR) however we are still awaiting further product attributes to complete the full Erudus specification.

Short Product Name:

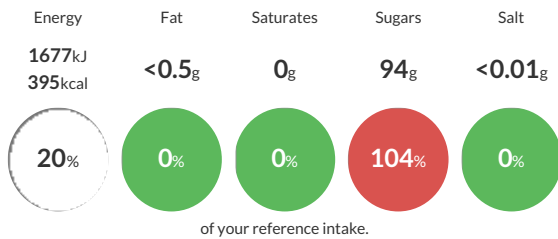
TREBOR EXTRA STRONG 41.3G PEPPERMINT

Mint flavoured sweets.

Traded Unit GTIN: **05000105002331** Internal GTIN: **0000050833917** Supplier : **Mondelez UK Ltd** Suppliers Product Code : **611460**

Reference Intake

Each 100g portion contains:



Typical values per 100g : Energy 1677kJ 395kcal

Nutritional Information

Typical Values	Per 100g
Energy	1677kJ 395kCal
Carbohydrates	98g
of which sugars	94g
Fat	<0.5g
of which saturates	0g
Fibre	-g
Protein	0.3g
Salt	<0.01g

Allergy Information

Key: **Contains** **May Contain**



Dietary Information

Key: **Suitable for**



Ingredients

Sugar, glucose syrup, starch, natural mint flavouring, gelatine, stabiliser (E415).