

Supplier's Product Code :  
 Product Added :  
 Last Updated by Supplier :  
 erudus id :

F10067  
 21 February 2024  
 21 February 2024  
 6ebcd9ff950b4f568929217daa558ce1



The information on the Erudus System has been supplied by the manufacturers of the products and, whilst the owners of the Erudus System take steps to ensure the information is regularly updated, they give no warranty and no guarantee that the information is accurate. Product information and ingredients may change, please always read product labels carefully in addition to using the information provided by Erudus One.

We do not accept liability for any inaccuracies or incorrect information contained on this site. Please visit <http://www.erudus.com/terms-and-conditions> for full terms and conditions.

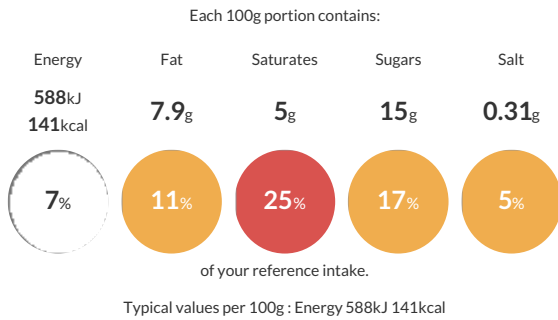
## Jude's Salted Caramel Ice Cream - 24 x 100ml

Short Product Name:  
 Salted Caramel Ice Cream

Jude's Salted Caramel Ice Cream

Traded Unit GTIN: 05060081112431 Internal GTIN: 5060081112493 Supplier: Judes Ices Suppliers Product Code: F10067

### Reference Intake



### Nutritional Information

Typical Values	Per 100g
Energy	588kJ 141kCal
Carbohydrates	15g
of which sugars	15g
Fat	7.9g
of which saturates	5g
Fibre	-g
Protein	2.5g
Salt	0.31g

### Allergy Information

Key: Contains May Contain

Does Not Contain Cereal/Gluten	Contains Milk	Contains Eggs	May Contain Peanuts	May Contain Nuts	Does Not Contain Crustaceans	Does Not Contain Mustard
Does Not Contain Fish	Does Not Contain Lupin	Does Not Contain Sesame	Does Not Contain Celery	Does Not Contain Soya	Does Not Contain Molluscs	Does Not Contain Sulphur Dioxide

### Dietary Information

Key: Suitable for

Suitable for Vegetarian	May not be suitable for Vegan	May not be suitable for Kosher	May not be suitable for Halal	NO DATA for Coeliac
-------------------------	-------------------------------	--------------------------------	-------------------------------	---------------------

### Allergen Statement

For allergens see ingredients in **BOLD**. May also contain **NUTS** and **PEANUT**.

### Ingredients

fresh whole **milk**, fresh double cream (**milk**) (18%), caramel (13%) (sweetened condensed **milk**, sugar, glucose-fructose syrup, water), sugar, skimmed **milk powder**, emulsifier (mono- and diglycerides of fatty acids), stabilisers (locust bean gum, guar gum), colour (plain caramel), pasteurised free range **egg yolk**, sea salt.