



The information on the [Erudus System](#) has been supplied by the manufacturers of the products and, whilst the owners of the Erudus System take steps to ensure the information is regularly updated, they give no warranty and no guarantee that the information is accurate. Product information and ingredients may change, please always read product labels carefully in addition to using the information provided by Erudus One.

We do not accept liability for any inaccuracies or incorrect information contained on this site. Please visit <http://www.erudus.com/terms-and-conditions> for full terms and conditions.

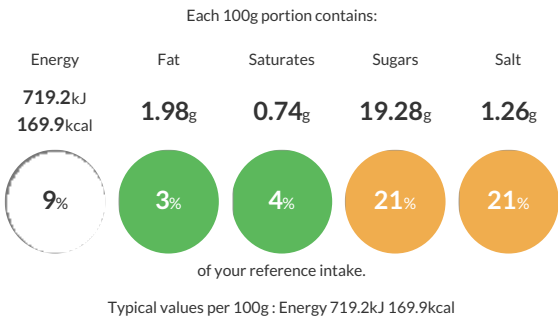
Purple Pineapple Chilli Beef 1kg

Short Product Name:  
Chilli Beef

Shredded beef & red kidney beans in a sweet chilli sauce

Traded Unit GTIN:  Internal GTIN:  Supplier:  Suppliers Product Code: 

Reference Intake



Nutritional Information

Typical Values	Per 100g
Energy	719.2kJ 169.9kCal
Carbohydrates	23.45g
of which sugars	19.28g
Fat	1.98g
of which saturates	0.74g
Fibre	-g
Protein	14.06g
Salt	1.26g

Allergy Information

Key:  Contains  May Contain



Does Not Contain Cereal/Gluten



Does Not Contain Milk



Does Not Contain Eggs



Does Not Contain Peanuts



Does Not Contain Nuts



Does Not Contain Crustaceans



Does Not Contain Mustard



Does Not Contain Fish



Does Not Contain Lupin



Does Not Contain Sesame



Does Not Contain Celery



Does Not Contain Soya



Does Not Contain Molluscs



Does Not Contain Sulphur Dioxide

Dietary Information

Key:  Suitable for



May not be suitable for Vegetarian



May not be suitable for Vegan



May not be suitable for Kosher



May not be suitable for Halal



NO DATA for Coeliac

Ingredients

Beef Brisket 40% (Beef, Salt); Chilli Sauce 30% (Water, sugar, spirit vinegar, tomato paste, golden syrup, thickener [E1422 modified starch], salt, red pepper flake, onion kibbled, spice [cayenne, ginger], garlic, herb [oregano], paprika [E160c] ); Red Kidney Beans 15% (Red kidney beans, water, salt); Thai Sweet Chilli Sauce 15% (glucose-fructose syrup, sugar, water, spirit vinegar, modified starch, garlic puree (water, dried garlic, acidity regulator (citric acid)), salt, dried garlic, birds eye chillies, dried red pepper, crushed chilli, preservative: potassium sorbate).