

Supplier's Product Code :
 Product Added :
 Last Updated by Supplier :
 erudus id :

YOMU71759
 08 November 2016
 15 February 2023
 70aea70298fc40048bdb25cfe3d0dfa3



The information on the Erudus System has been supplied by the manufacturers of the products and, whilst the owners of the Erudus System take steps to ensure the information is regularly updated, they give no warranty and no guarantee that the information is accurate. Product information and ingredients may change, please always read product labels carefully in addition to using the information provided by Erudus One.

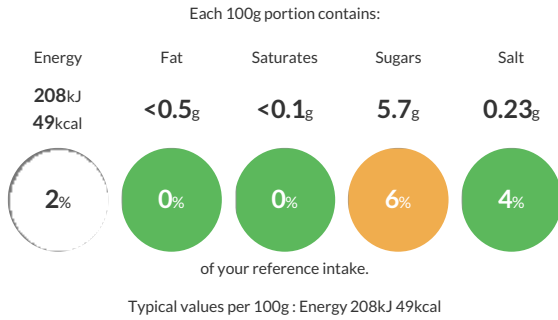
We do not accept liability for any inaccuracies or incorrect information contained on this site. Please visit <http://www.erudus.com/terms-and-conditions> for full terms and conditions.

Mullerlight Mixed Case B - Mullerlight Smooth Strawberry

A mixture of smooth strawberry and toffee fat free yogurts with sweetener.

Traded Unit GTIN: - Internal GTIN: Supplier: Central Supplies Suppliers Product Code: YOMU71759

Reference Intake



Nutritional Information

Typical Values	Per 100g
Energy	208kJ 49kCal
Carbohydrates	6.5g
of which sugars	5.7g
Fat	<0.5g
of which saturates	<0.1g
Fibre	-g
Protein	4.9g
Salt	0.23g

Allergy Information

Key: Contains May Contain

Does Not Contain Cereal/Gluten	Contains Milk	Does Not Contain Eggs	Does Not Contain Peanuts	Does Not Contain Nuts	Does Not Contain Crustaceans	Does Not Contain Mustard
Does Not Contain Fish	Does Not Contain Lupin	Does Not Contain Sesame	Does Not Contain Celery	Does Not Contain Soya	Does Not Contain Molluscs	Does Not Contain Sulphur Dioxide

Dietary Information

Key: Suitable for

Suitable for Vegetarian	May not be suitable for Vegan	May not be suitable for Kosher	May not be suitable for Halal	Suitable for Coeliac
-------------------------	-------------------------------	--------------------------------	-------------------------------	----------------------

Gluten Claim

Gluten content is less than 20ppm.

Ingredients

Yogurt (MILK), Water, Strawberry Puree (5%), Modified Maize Starch, Stabiliser: Pectins. Colouring Food: Beetroot Juice Concentrate. Flavourings, Acidity Regulators: Citric Acid, Sodium Citrates. Sweetener: Aspartame.

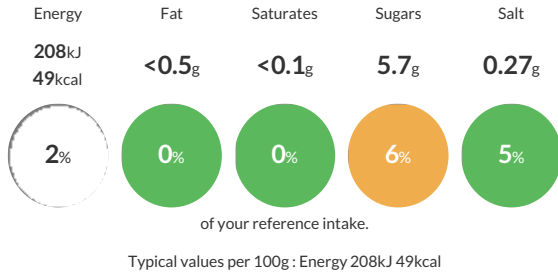
Mullerlight Mixed Case B - Mullerlight Smooth Toffee

A mixture of smooth strawberry and toffee fat free yogurts with sweetener.

Traded Unit GTIN: Internal GTIN: Supplier: **Central Supplies** Suppliers Product Code: **YOMU71759**

Reference Intake

Each 100g portion contains:



Nutritional Information

Typical Values	Per 100g
Energy	208kJ 49kCal
Carbohydrates	6.6g
of which sugars	5.7g
Fat	<0.5g
of which saturates	<0.1g
Fibre	-g
Protein	4.8g
Salt	0.27g

Allergy Information

Key: **Contains** **May Contain**

Does Not Contain Cereal/Gluten	Contains Milk	Does Not Contain Eggs	Does Not Contain Peanuts	Does Not Contain Nuts	Does Not Contain Crustaceans	Does Not Contain Mustard
Does Not Contain Fish	Does Not Contain Lupin	Does Not Contain Sesame	Does Not Contain Celery	Does Not Contain Soya	Does Not Contain Molluscs	Does Not Contain Sulphur Dioxide

Dietary Information

Key: **Suitable for**

Suitable for Vegetarian	May not be suitable for Vegan	May not be suitable for Kosher	May not be suitable for Halal	Suitable for Coeliac
-------------------------	-------------------------------	--------------------------------	-------------------------------	----------------------

Gluten Claim

Gluten content is less than 20ppm.

Ingredients

Yogurt (MILK), Water, Modified Maize Starch, Flavourings, Colour: Plain Caramel. Salt, Sweeteners: Aspartame, Acesulfame k. Stabiliser: Pectins.