

Supplier's Product Code :  
 Product Added :  
 Last Updated by Supplier :  
 erudus id :

LF522CT/CFLF522CT  
 31 March 2026  
 01 April 2026  
 70ec28c10ed240269e71c1b4c06dd78e



The information on the **Erudus System** has been supplied by the manufacturers of the products and, whilst the owners of the Erudus System take steps to ensure the information is regularly updated, they give no warranty and no guarantee that the information is accurate. Product information and ingredients may change, please always read product labels carefully in addition to using the information provided by Erudus One.

We do not accept liability for any inaccuracies or incorrect information contained on this site. Please visit <http://www.erudus.com/terms-and-conditions> for full terms and conditions.

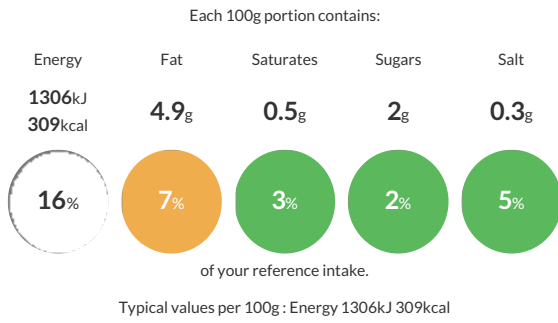
## 9" Thin Pizza Crust (Lower Fat) (x 30)

Short Product Name:  
 Thin Pizza Crust

Thin, crispy round lower fat 9 inch pizza base made from wheat flour.

Traded Unit GTIN: **05060286060018** Internal GTIN: Supplier: **Capri Foods Ltd** Suppliers Product Code: **LF522CT/CFLF522CT**

### Reference Intake



### Nutritional Information

Typical Values	Per 100g
Energy	1306kJ 309kCal
Carbohydrates	56.6g
of which sugars	2g
Fat	4.9g
of which saturates	0.5g
Fibre	2.2g
Protein	8.5g
Salt	0.3g

### Allergy Information

Key: **Contains** **May Contain**

Contains Cereal/Gluten	May Contain Milk	Does Not Contain Eggs	Does Not Contain Peanuts	Does Not Contain Nuts	Does Not Contain Crustaceans	Does Not Contain Mustard
Does Not Contain Fish	Does Not Contain Lupin	Does Not Contain Sesame	Does Not Contain Celery	Does Not Contain Soya	Does Not Contain Molluscs	Does Not Contain Sulphur Dioxide

### Dietary Information

Key: **Suitable for**

Suitable for Vegetarian	Suitable for Vegan	May not be suitable for Kosher	May not be suitable for Halal	NO DATA for Coeliac
-------------------------	--------------------	--------------------------------	-------------------------------	---------------------

### Ingredients

WHEAT Flour (77%) (WHEAT Flour, Calcium Carbonate, Iron, Niacin, Thiamine), Water, Pre-mix [WHEAT Flour (WHEAT Flour, Calcium Carbonate, Niacin, Iron, Thiamine), Sugar, Potassium Chloride, Salt, Emulsifier- Mono and Diacetyltartaric Acid Esters of Mono- and Diglycerides of Fatty Acids, Flour Treatment Agent- Ascorbic Acid], Rapeseed Oil, Yeast.